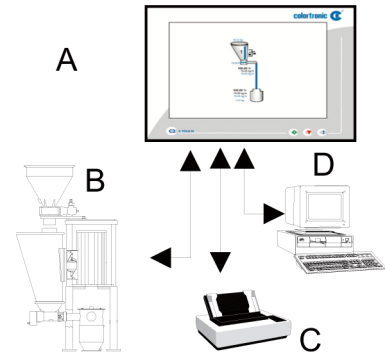


Typical application of a Gravimetric Control System

- A Dosing control system
- B Gravimetric dosing unit
- C Printer
- D Host

Component A is described below.



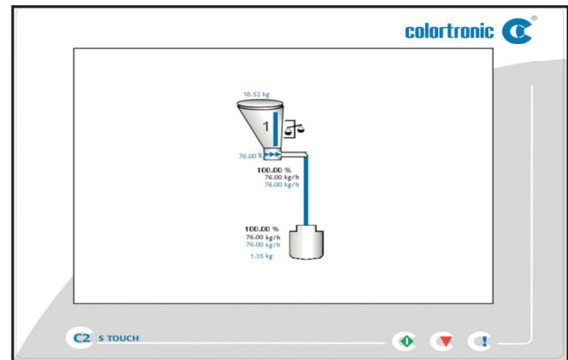
**Brief Description**

The Colortronic C2 S-Touch dosing control system is a computerized closed loop control for a single Colortronic gravimetric dosing and blending unit.

Data entry can be made during production by means of a touch screen. Operation is menu-driven and can be password protected.

The control offers graphical and numerical display of the operation parameters of the entire installation. In the event journal, all changes in the settings and all alarm messages are time stamped.

- Colortronic dosing control systems are completely maintenance-free and designed for 7 day, 24 hour operation.
- Colortronic dosing control systems meet the European “CE” requirements



**Technical Information**

**Basic Version**

- TFT Touch Screen Display
- Data buffer in case of power failure
- Real-time clock
- One station can be controlled
- Type of protection: IP 54
- Permissible operating temperature: 14 ° to 113 °F (-10 ° to 45 °C)
- Permissible storage temperature: -13 ° to 158 °F (-25 ° to 70 °C)
- Operating voltage: 110-240 VAC, N, PE, 50/60 Hz
- Connected load of control unit: 160 W maximum
- Dry contact alarm output in central control system
- Interfaces: Local I/O: RS422, RS232 (Service)
- Inputs for external setpoint variables

**Optional Equipment**

- C2 Live Report
- Host protocols via serial RS422 interface:
  - Modbus Midicon RTU  
Modbus configuration s. list Rev: 1.09
  - Siemens 3964 R RK512  
Siemens configuration s. list Rev 1.09
  - Profibus DP (additional hardware)  
Configuration list profibus
  - CT host protocol
  - CT standard protocol
  - CT 9 bit protocol

## Functions

- Menu driven
- Messages and entries in plain text and/or graphic
- Date and time
- Entries are checked for wrong data (message)
- Storage of dosing factors and/or refill limits  
Recipe entry in % or units (e.g. lbs/h)
- Adjustable password levels
- Online system configuration
- Online multi-language display
- Online switching of units (kg/h, kg/min, lb/hr, lb/min, metric tons/hr, tons av/hr, grams/hr, grams/min)
- Feeder modes:
  - Feeder local setpoint manual
  - Feeder ratio
  - Setpoint automatic, via level sensor or external setpoint
- Printer
  - Parallel interface print of screen shots
  - HP Desk Jet / HP compatible PCL printer
  - Postscript printer print of online alarms and/or event messages
  - Matrix printer (line print)
  - All ISO 8859
  - 1 printer (no line print)
- Alarm protocol alarms are monitored by number, time and acknowledgement. 100 messages per day, max. 3 days
- Event protocol
- All changes of entries are monitored by time. 100 messages per day, max. 3 days
- Quantity mode
- Automatic feeder stop if pre-selected quantity is reached
- Auto calibration of dosing stations by calibration button
- Pre-selection of calibration drive command
- Feeder totalisator
- Desired / actual value display
- Gravimetric / volumetric mode adjustable
- Adjustable alarm limits
  - Drive command high/low
  - Percent value feeding quantity high/low
- Online service / diagnostic port RS232
- PC interface for recording and analyzing of process dataPS 2 interface for external key board
- Dry contact at central control unit
- VGA interface for external monitor
- Online interface for service tool
- Digital input via fanout board for each feeder:
  - Enable-Start Feeder                      Optionboard
  - Stop Feeder                                      Optionboard
  - Alarm shut down                              Optionboard
- Digital output via fanout board for each feeder:
  - Refill, alarm, operation report      Optionboard
- Graphic display of all inputs / outputs
- Trend display desired / actual values for line and feeder

---

**Corporate Headquarters:**