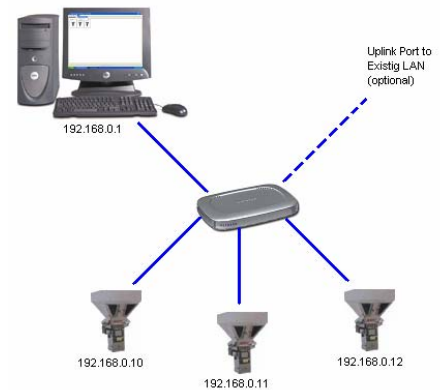


### Typical A3 Network Installation

(Computer, Cables and optional hub supplied by customer)



A3 Software is described below

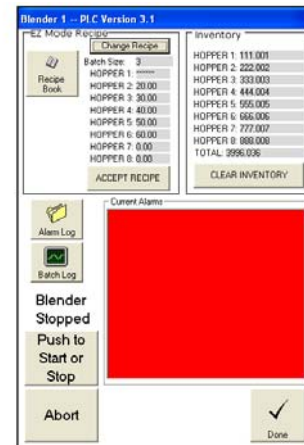
### Standard Features

A3 control and data acquisition systems are compatible with Mitsubishi control systems, when equipped with the proper communication option.

**Note: Communication modules and cables are not included – purchase separately.**

### A3 Data Acquisition Software Features:

- Compatible with MS Windows XP Home and Professional Addition
- Monitor up to 1000 Mitsubishi controlled blenders
- Start and stop blenders and feeders
- Monitor and control recipes for each blender
- Log up to 1000 alarms per blender
- Log up to 5000 consecutive batch weights
- Monitor and record all recipe changes
- Monitor material inventory, even if cleared at the blender
- Compatible with MS Works or Office 2000, including Access, Excel and Word
- Download inventory run rates, run status, target vs. actual recipe set points
- Store and infinite number of recipes (limited only by hard drive space on computer)
- Upload and download recipes and access recipe storage book functions
- Automatically generate time/date stamped reports on an hourly basis
- Two tier password security
- Job report manager that tracks material reference numbers as well as lot numbers and silo numbers



### PC System Requirements

- Pentium II 750 Mhz minimum processor speed (Pentium 4 recommended)
- Windows XP operating system (service pack 1 installed)
- Internet Explorer 6.0
- 30 GB minimum hard drive space (60 GB recommended)
- 128 MB minimum RAM (512 MB DDR Ram recommended)
- CD-ROM drive (CD-RW recommended)
- Video card capable of 1024x768x16 bit color (32 bit color recommended)
- 1 USB slot (required for **optional** RS-422)
- Standard Ink Jet Printer (if you are going to print the reports)

### A3 Feature Availability

√ denotes availability

Software kit Mitsubishi controlled blenders		√
Ethernet Module for Mitsubishi blender	One per blender	√

### Requirements for blenders (CSG) with Mitsubishi controls

- Each blender must have the **optional** Ethernet module installed
  - Ethernet Module
  - Module Cable
- Each blender must have correct software version. **Consult Factory.**
- All blenders and the host PC must be on the same Ethernet network, which is installed by the customer using CAT 5 cable. **If the blenders are on a stand-alone network, and not part of an existing network, the customer will also need to supply a hub or switch.** The network installation should be done by the customer's IT department or a professional. ACS does not provide installation services for the Ethernet network. Refer to the A3 manual for further details.

[www.colortronicna.com](http://www.colortronicna.com)

#### Corporate Headquarters:

Colortronic North America, Inc.  
4100 Market Place  
Flint, MI 48507  
Tel. 810-720-7300  
Fax. 810-720-2598  
[colortronicweb@corpemail.com](mailto:colortronicweb@corpemail.com)

Dimensions and data not binding. Copyright by Colortronic 2005.