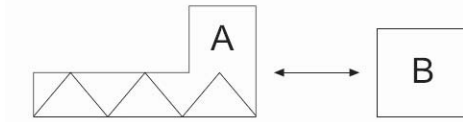


Typical setup for a dosing system with a single screw station.

- A Single screw dosing station
- B Motor control
- C Load cell
- D Dosing control



Component A is described below.

Brief Description

Colortronic's volumetric single screw feeder CS65 is ideally suited for dosing powders, pellets, granulates, regrinds, fibers, and flakes in continuous and batching processes. The compact modular design gives the operator the flexibility to meet changing process requirements. Volumetric feed rates range from 1-2,850 lbs/hr (0.4-109 cu.ft/hr).

The horizontal agitator constantly keeps material in motion, thus eliminating bridging and maintaining consistent screw fill. All material contact surfaces are manufactured from corrosion resistant stainless steel. Colortronic's Voludrive controllers offer the operator full access to all feeder parameters through an icon driven control interface.





Construction

- Volumetric single screw feeder with horizontal discharge
- Feed hopper with horizontal agitator, including v-clamp and sseal to mount accessories
- Voludrive controller for DC motors to 500W
- Operating control voltage: 230/1/50-60 Hz
- Color: Light gray RAL 7035

Features

- Compact construction
- Stainless steel material contact surfaces 1,4404/316L
- Material seals manufactured from Teflon and silicone
- Easy removal and cleaning of components with unique fastener system
- Maintenance free gears eliminate down time
- Simple installation with base plate

Performance

		S 					F 			
		Spiral Screw					Auger Screw			
Gear	Speed min ⁻¹	Ø 50x50 l/h	Ø 50x25 l/h	Ø 43x80 l/h	Ø 43x40 l/h	Ø 30x32 l/h	Ø 51x70 l/h	Ø 51x50 l/h	Ø 51x25 l/h	Ø 32x32 l/h
7:1	31-586	151-2854	86-1635	147-2278	117-2203	47-879	149-2813	126-2385	74-1395	41-779
15:1	15-273	73-1330	42-762	71-1294	56-1026	23-410	72-1310	61-1111	36-650	20-363
28:1	8-146	39-711	22-407	38-692	30-549	12-219	38-701	33-594	19-347	11-194
Gear	Speed min ⁻¹	Ø 30x16 l/h	Ø 20x20 l/h	Ø 20x11 l/h			Ø 32x16 l/h	Ø 17x17 l/h	Ø 17x11 l/h	
7:1	31-586	28-533	19-357	10-188			20-375	4-70	5-53	
15:1	15-273	14-248	9-167	5-87			10-175	2-33	1-25	
28:1	8-146	7-133	5-89	3-47			5-93	1-18	1-13	

The given throughput data refer to approximate values and is based on measurements with PS-reference granule, free flowing, with a bulk density of 0.6 kgs/l. The performance data for other materials may be different and is subject to individual testing.

Optional Equipment

Accessories/Options

- Hopper extension modules
- Dust tight filters
- Vertical outlet tubes
- Extended screws 100/150/200 mm
- Frequency speed control for AC Motors

Installations

- Stand alone volumetric feeder or integrated with other feeding devices
- Continuous or batch feeding
- Gravimetric control integration

Technical Information

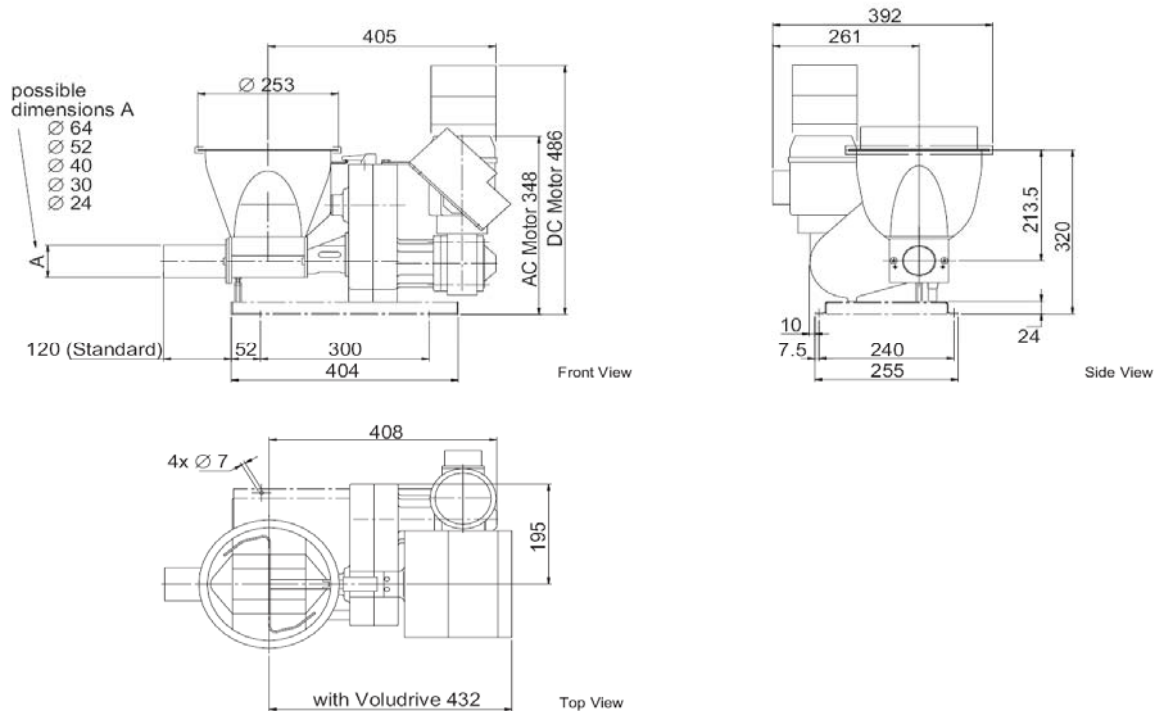
DC Motor-Drive

- Motor Size: 0.37 kW
- Voltage: 180 VDC
- Maximum Speed: 1800 RPM
- Motor Class: IP54
- Speed Reducers: 7:1/5:1/28:1

AC Motor-Drive (Option)

- Motor size: 0.375 kW
- Voltage: 230-460/3/50-60 Hz
- Maximum Speed at 50 Hz: 1400 RPM
- Maximum Speed at 60 Hz: 1680 RPM
- Motor Class: IP54
- Speed Reducers: 7:1/15:1/28:1
- Weight: 75 lbs (35 kgs)
- Feed hopper Volume: 6.1L (0.2 cu.ft/h)

Drawing



www.colortronicna.com

Corporate Headquarters:

Colortronic North America, Inc.
 4100 Market Place
 Flint, MI 48507
 Tel. 810-720-7300
 Fax. 810-720-2598
colortronicweb@corpemail.com

Colortronic Systems AG
 Hunzenschwil, Switzerland
 Tel: +41 62 689 25 25
 Fax: +41 62 689 25 26
info@colortronic.ch

Colortronic Systems GmbH
 Friedrichsdorf, Germany
 Tel: +49 61 75 7 92 167
 Fax: +49 61 75 7 92 284
ctsystems@colortronic.de