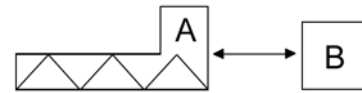


Typical Application of a Single Screw Feeder in a Dosing System.

A Single Screw Feeder  
B Motor Control



Component A is described below

### Colortronic CS120 Volumetric Single Screw Feeder

Colortronic's volumetric single screw feeder CS120 is ideally suited for dosing powders, pellets, granulates, regrinds, fibers, and flakes in continuous and batching processes. The compact modular design gives the operator the flexibility to meet changing process requirements.

Volumetric feed rates range 10-500 cubic feet per hour. The horizontal agitator constantly keeps material in motion, thus eliminating bridging and maintaining consistent screw fill. All material contact surfaces are manufactured from corrosion resistant stainless steel. Colortronic's Voludrive controller offers the operator full access to all feeder parameters through an icon driven control interface.

#### Standard Features

- Volumetric single screw feeder with horizontal discharge
- Feed hopper with horizontal agitator, including v-clamp and seal to mount accessories
- Voludrive controller for DC motors to 750 W
- Operating voltage: 230/1/50-60 Hz
- Compact construction
- Stainless steel material contact surfaces
- Material seals manufactured from Teflon and silicone
- Easy removal and cleaning of components with unique fastener system
- Maintenance free gears eliminate down time
- Simple installation with base plate

#### Optional Features

- Hopper extension modules
- Dust tight filters
- Vertical outlet tubes
- Extended screws 100, 150, and 200 mm
- Frequency speed control for AC motors
- Stand alone volumetric feeder or integrated with other feeding devices
- Continuous or batch feeding
- Gravimetric control integration



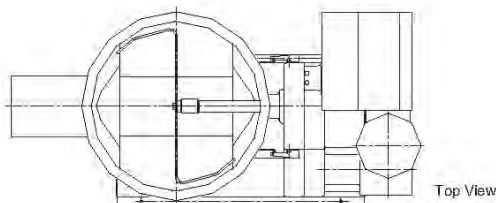
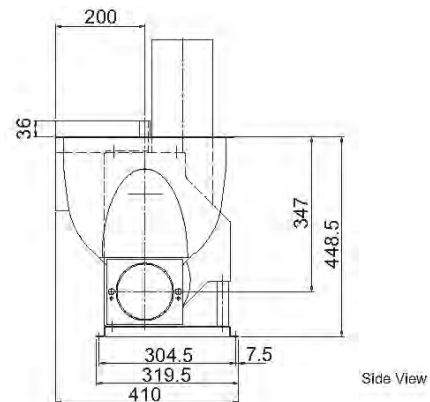
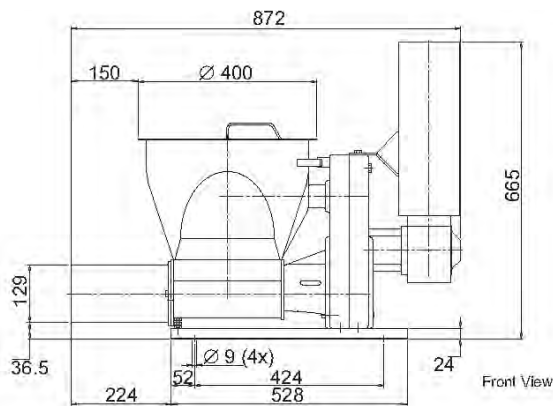
## Specifications

### DC Motor

Motor Size:	0.75 kW
Voltage:	180 VDC
Maximum Speed at 60 Hz:	1,800 RPM
Motor Class: IP	54
Speed Reducers:	7:1 / 15:1
Weight:	165 lb (75 kg)
Feed hopper volume:	0.9 cu ft (26 liter)

### AC Motor

Motor Size:	0.75 kW
Voltage:	230-460/3/50-60 Hz
Max Speed at 60 Hz:	1,750 RPM
Motor Class:	IP 54
Speed Reducers:	7:1 / 15:1
Weight:	165 lb (75 kg)
Feed hopper volume:	0.9 cu ft (26 liter)



[www.colortronicna.com](http://www.colortronicna.com)

### Corporate Headquarters:

Colortronic North America, Inc.  
 4100 Market Place  
 Flint, MI 48507  
 PH: 810-720-7300  
 FX: 810-720-2598  
[colortronicweb@corpemail.com](mailto:colortronicweb@corpemail.com)

Dimensions and data not binding. Copyright by Colortronic 2007.