

Brief Description

Application:

CSL and CSIL Loaders are used to convey material into the processing machine from storage containers or from nearby storage containers. The CSL03 is used for virgin material or clean additives. The CSL 06-45 models can be used to convey virgin and regrind materials. The modular design allows these units to be economically reconfigured to accommodate future production requirements. For visual monitoring of material flow, Pyrex™ sight glass models are also available (CSIL models). Sight glass assemblies are equipped with an adjustable proximity sensor to ensure full material discharge on each cycle.

Standard Features

- Brushed stainless steel construction, with stainless steel product contact surfaces
- 3/8" high flow blowback valve with electrical quick disconnect
- Accumulator tank ①
- 1.5" OD material inlet
- Removable inlets ①
- Material demand sensor
- Hopper-mounted junction box with 12 feet of cable to a field-mounted 115/1/60 control box
- Aluminum pick-up wand with ten (10) feet of flexible vinyl hose and two (2) hose clamps
- High-performance centrifugal motor with electrical quick disconnect
- 9-foot (2.7 m) power cord
- Glazed polyester reinforced flat filter
- High-performance centrifugal motor with quick disconnect (optional)
- Series One Plus models (option upgrade) include a proximity level sensor for volume filling, built-in proportioning, control capacity, and a no convey alarm; CPV available separately ✎

Optional Features

- 230/1/50 or 230/1/60
- Series One Plus Controller (this option is required when CPV proportioning valve is used) ①
- High-temperature (400° F) silicone discharge throat gasket ②
- White neoprene discharge throat gasket: 180° F ②
- Nylon filter in lieu of standard polyester – recommended for dusty, non-abrasive regrind material
- Remote proportioning valve with 1 aluminum pickup wand, 10' of flexible hose, O-ring coupler, 2 hose clamps, and cable assembly CPV connection to Series One Plus controller, 1.5" OD inlet/outlet tube; 115/1/60 or 230/1/60 voltage. Hopper mount is standard; wall mount or floor stand are also available. ①
- Sight glass with proximity sensor for minimum inventory on molding machine, with square flange.

① Not available for CSL 03 or CSI 03 loaders.

② Not available for CSIL loaders or CSL 03 loaders.

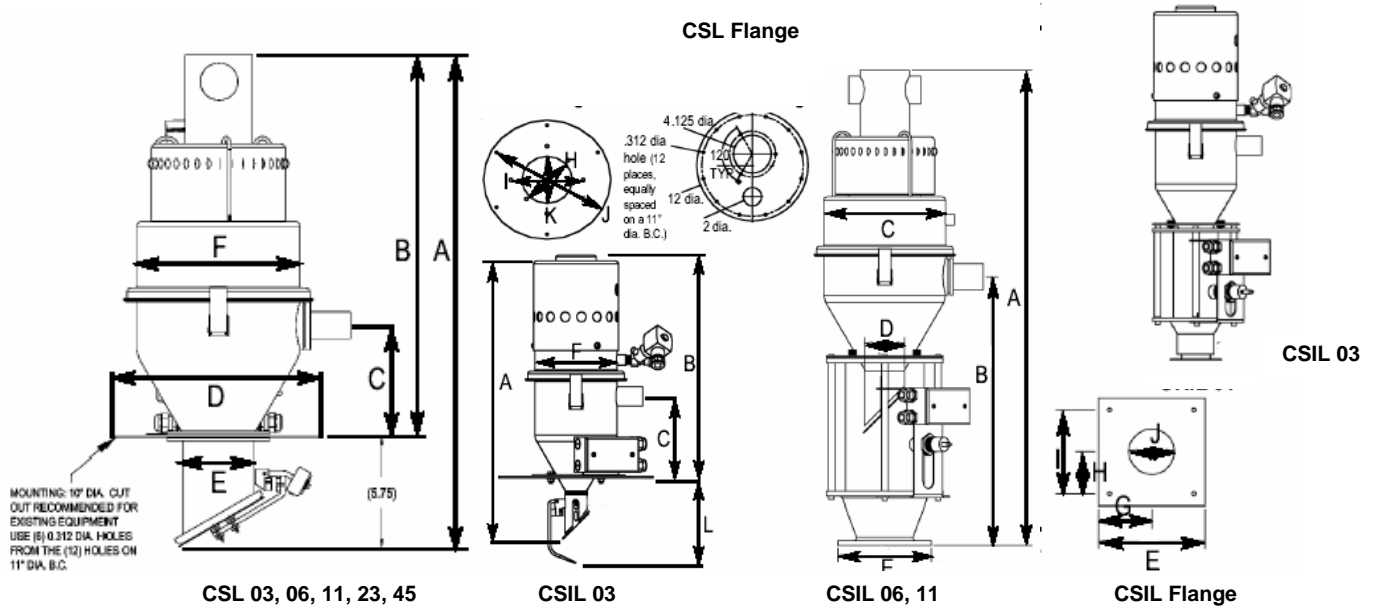


Specifications

Model	Hopper Capacity, cu. ft. (l)	Hopper Capacity, lbs. (kg)	FLA	Shipping Weight, lbs. (kg)	Throughput-non-proportioning lbs./hr (kg/hr)*	Throughput-proportioning, lbs./hr (kg/hr)*	Sight Glass Capacity, cu. ft. (l)	Sight Glass Capacity, lbs. (kg)
CSIL-03	0.1 (2.8)	3.5 (1.5)	11	50 (23)	150 (68)	N/A	0.02 (0.57)	0.68 (0.31)
CSL-06	0.2 (5.6)	7.0 (3.1)	10	65 (30)	500 (227)	400 (181)	N/A	N/A
CSIL-06	0.2 (5.6)	7.0 (3.1)	10	70 (32)	500 (227)	400 (181)	0.09 (2.55)	3.25 (1.48)
CSL-11	0.4 (11.3)	14.0 (6.3)	10	67 (31)	1000 (454)	800 (363)	N/A	N/A
CSIL-11	0.4 (11.3)	14.0 (6.3)	11	72 (33)	1000 (454)	800 (363)	0.09 (2.55)	3.25 (1.48)
CSL-23	0.8 (22)	28 (12.7)	10	75 (34)	1500 (680)	1200 (544)	N/A	N/A
CSL-45	1.6 (45)	56 (25.4)	10	80 (36)	1700 (771)	1350 (612)	N/A	N/A

* Maximum throughput beside-the-press loading; includes 12' vertical lift. Rates decrease as horizontal distances increases.

Dimensions



Model	A	B	C	D	E	F	H ①	I ②	J ③	K	L
CSL-03	24.625 (63)	17.375 (44)	6.375 (16)	12 (31)	1.75 (4)	6.375 (16)	5.5 (14)	6.8125 (17)	11 (28)	4.75 (12)	6.75 (17)
CSL-06	24.625 (63)	21.125 (54)	5.5 (14)	12 (31)	4 (10)	9.125 (23)	N/A		11 (28)	4.75 (12)	N/A
CSL-11	29.875 (76)	27.125 (69)	11.5 (29)	12 (31)	4 (10)	9.125 (23)			11 (28)	4.125 (11)	
CSL-23	36 (92)	30.25 (77)	10.5 (27)	12 (31)	4 (10)	14.125 (36)			11 (28)	4.125 (11)	
CSL-45	42.25 (107)	36.5 (93)	17.75 (45)	12 (31)	4 (10)	14.125 (36)			11 (28)	4.125 (11)	

- ① 5/16" (8mm) dia. holes; 2 places, equally spaced
- ② 5/18" (7 mm) dia. holes; 4 places equally spaced
- ③ 1/4" (6.3 mm) dia. holes; 6 places equally spaced (J is standard pattern)

Model	A	B	C	D	E	G	H	I	J
CSIL-03	24.625 (70)	17.16 (44)	6.375 (16)	1.75 (4)	4 (10)	2 (5)	1.25 (3)	1.5 (4)	2 (5)
CSIL-06	24.64 (63)	18.89 (48)	9.125 (23)	3 (8)	7 (18)	3.5 (9)	2.75 (7)	5.5 (14)	3 (8)
CSIL-11	41.25 (105)	24.11 (61)	9.125 (23)	3 (8)	7 (18)	3.5 (9)	2.75 (7)	5.5 (14)	3 (8)

- ④ 0.281" (7.1 mm) dia. Holes; 4 places equally spaced

www.colortronicna.com

Corporate Headquarters:

Colortronic North America, Inc.
4100 Market Place
Flint, MI 48507
PH: 810-720-7300
FX: 810-720-2598
colortronicweb@corpemail.com