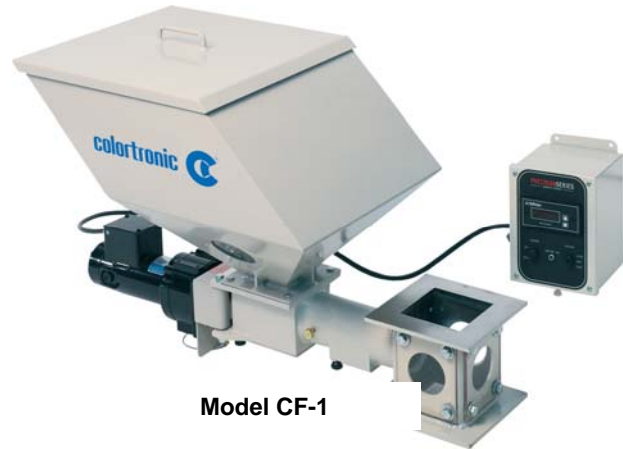


### Brief Description

CF Series volumetric additive feeders have become the industry standard of accuracy and dependability for precision metering of color concentrate, regrind, and other additives. Proven mechanical features include modular design for one or two materials, low-profile throat section, and an easy-to-clean, interchangeable stainless steel auger assembly.

Meters a free-flowing additive directly into the feed throat of a processing machine. The CF-1 and CF-200 can also be used to starve feed an extruder.



**Model CF-1**

### All CF-1 & CF-2 Series standard volumetric additive feeders include:

- Swing-out sample and cleanout door
- Closed loop graphic control with push-button digital display
- 1.0 cu. ft. aluminum additive supply hopper with two sight glasses and manual fill cover
- 6" high modular steel base with 7" square flange and sight glasses
- 1/10 hp DC variable speed drive motor (2 to 71 rpm) with quick-change hinged mounting
- Stainless steel auger with UHMW polyethylene insert and bearing
- 115/1/60 supply voltage

### All CF-M Series mini volumetric additive feeders include:

- Calibration sample port
- Drain port for cleanup
- Closed loop graphic control with push-button digital set point display
- Mini design for small processing machines
- 4" OD polycarbonate additive supply hopper, with manual fill cover
- 4.625" square spool aluminum feeder body mounting flange, with 4" bolt hole pattern
- 1/10 hp DC variable speed drive motor (2 to 71 rpm), with hinged motor mount
- 1/4" or 3/8" diameter stainless steel auger with UHMW polyethylene insert and bearing
- 0.2 to 40 grams per minute metering range
- 115/1/60 supply voltage

### All CF-200 Series heavy-duty volumetric feeders can be used as a starve feeder, and include:

- Heavy-duty rugged design for higher rates and added compatibility with regrinds
- Calibration sample port
- 1.0 cu. ft. aluminum additive supply hopper with two sight glasses and hand fill cover
- Heavy-duty gearbox
- Premium mounting flange with drain port – 8" x 8" with 6" bolt hole pattern
- Drain tube with slide gate below cast aluminum feeder housing
- 1/4 hp DC variable speed drive motor (1,725 rpm), with hinged motor mount (3" auger uses 1/2 hp)
- Steel auger with aluminum feed tube
- 115/1/60 supply voltage

### Additive Feeder Model Specifications

Selection Style	Model no.	Dimensions						Shipping weight	
		L		W		H		lbs.	Kg
		in.	cm	in.	cm	in.	cm		
Single	CF-1	31.5"	79 cm	15"	38 cm	18.75"	48 cm	50	23
Dual	CF-2	55.5"	141 cm					90	41
Single	CF-M	30"	76 cm	6.5"	17 cm	18.5"	47 cm	50	23
Single	CF-200	34.75"	87 cm	18.75"	48 cm	21.75"	55 cm	75	34

### Throughput Rates Table

**Note:** CF-1 models have a single auger; CF-2 models have two (2) augers.

Auger size Diameter (inches)	Model availability	Approximate throughput rate <sup>①</sup>	
		Minimum (lbs./hr.)	Maximum (lbs./hr.)
0.250"	CF-M	0.26 (0.2 gm/min)	1.32 (10 gm/min)
0.375"	CF-M	0.93 (7 gm/min)	5.29 (40 gm/min)
0.500"	CF-1/CF-2	1	7
0.750"	CF-1/CF-2	1.5	25
1.000"	CF-1/CF-2	4	55
1.250"	CF-1/CF-2	7	110
1.500"	CF-1/CF-2	13	200
1.625"	CF-200	60	400   1,450 <sup>②</sup>
1.750"	CF-1/CF-2	18	250
2.000"	CF-200	90	600   2,150 <sup>②</sup>
3.000"	CF-200	300	1,500   6,550 <sup>②</sup>

<sup>①</sup> Higher rate shown based on lab tests using optional high-performance variable frequency inverter drive package (CF-200 only).

<sup>②</sup> Rate based on color concentrate pellets @ 45 lbs./ft.<sup>3</sup> - derate throughput for lighter materials.

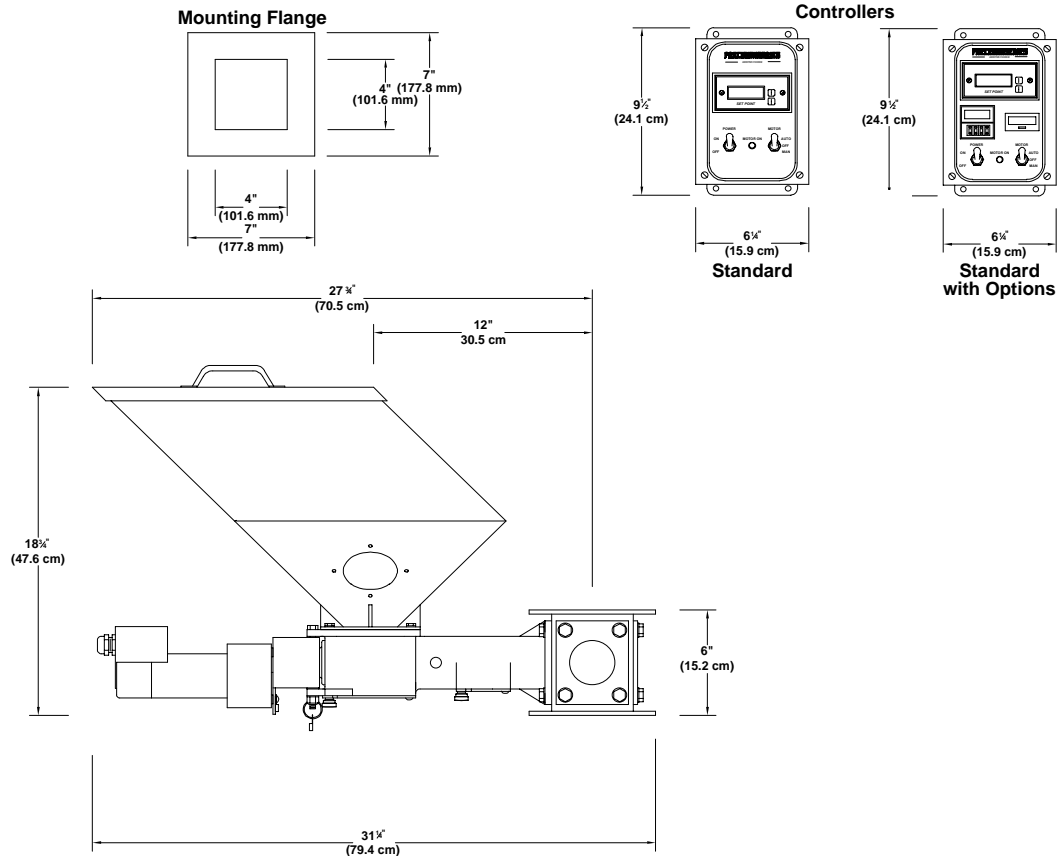
### Additive Feeder Option Availability

✓ denotes availability

Description	Availability			
	CF-1	CF-2	CF-M	CF-200
Removable 0.3 ft <sup>3</sup> additive supply hopper, including slide gate & sight glass (Hand fill cover only)	✓		N/A	
230/1/50-60 supply voltage	✓	✓	✓	✓
Flange transition: 7" square to 4" square			✓	
8"-high modular base (in lieu of 6") — required for machine hoppers with less than 60° cone			✓	
Deduct for feeder without modular base		(✓)	NA	
Additive supply hopper cover for field-mounting CR Series hopper loader or vacuum receiver	✓	✓	✓	
2.0 cu. ft. additive supply hopper	✓	✓	NA	✓
Calibration timer with cycle counter (injection)	✓	✓	✓	
Extruder tracking control; includes customer-mountable 0 to 5 VDC optical speed sensor (extrusion) <sup>①</sup>	✓	✓	✓	
Spare auger assembly: all diameters (includes auger, insert, and bearing)		✓		✓
Regrind insert; recommended for use on regrind applications (not available with 1.750" auger)	✓	✓	NA	
High-performance variable frequency drive package: <ul style="list-style-type: none"> <li>• Heavy-duty ICS34 gearbox</li> <li>• ¼ hp AC inverter-duty motor, with hinged motor mount (3" auger uses ½ hp)</li> <li>• Premium variable frequency inverter drive for precise control and wide metering range</li> <li>• Includes easy speed pot control and digital setup capabilities</li> </ul>		NA		✓

<sup>①</sup> Consult factory if the customer currently has a speed sensor already installed.

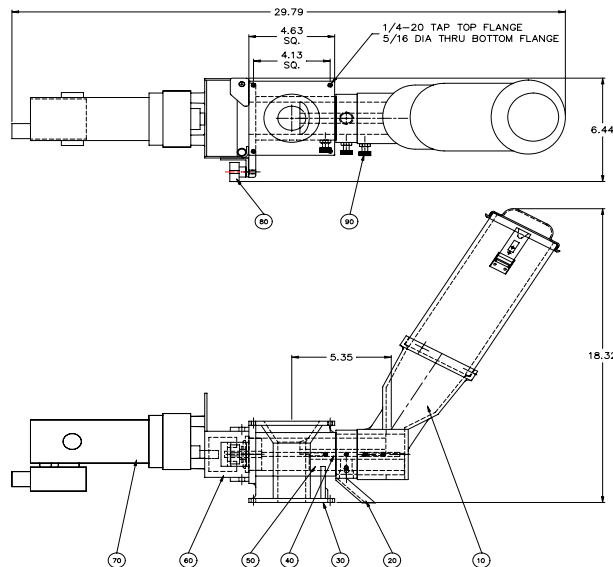
### CF-1 & CF-2 Drawing and Dimensions



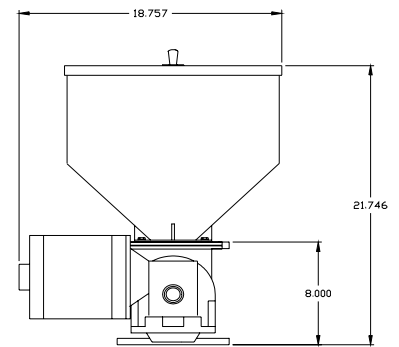
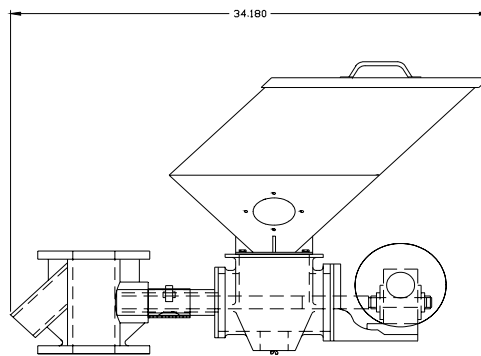
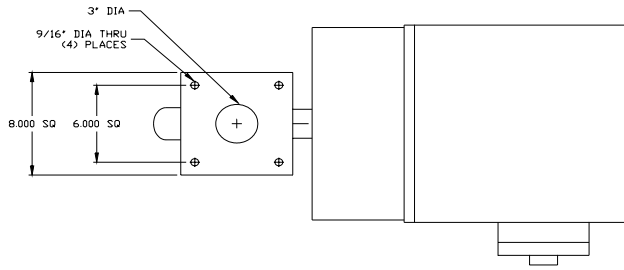
Overall width of unit is 15" (38.1 cm).

For 2.0 cu. ft. (56.6 liter) hopper, mounting flange and 6" (15.2 cm) modular base measurements do not change. Add 5" (12.7 cm) to all other dimensions.

### CF-M Drawing & Dimensions



## CF-200 Drawing and Dimensions



[www.colortronicna.com](http://www.colortronicna.com)

**Corporate Headquarters:**  
Colortronic North America, Inc.  
4100 Market Place  
Flint, MI 48507  
Tel. 810-720-7300  
Fax. 810-720-2598  
[colortronicweb@corpemail.com](mailto:colortronicweb@corpemail.com)

Dimensions and data not binding. Copyright by Colortronic 2005.