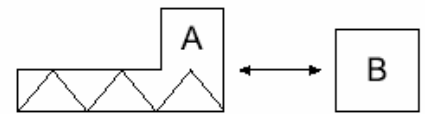


Typical application of a single-screw feeder in a dosing system.

A Single screw feeder
B Motor control



Component A is described below

Brief Description

Colortronic's CS75 volumetric single screw feeder is ideally suited for dosing powders, pellets, granulates, regrinds, fibers and flakes in continuous and batching processes. The compact modular design gives the operator the flexibility to meet changing process requirements. Volumetric feed rates range from 0.04-340 cubic feet per hour. The horizontal agitator constantly keeps material in motion, thus eliminating bridging and maintaining screw fill. All material contact surfaces are manufactured from corrosion-resistant stainless steel. Colortronic's Voludrive controller offers the operator full access to all feeder parameters through an icon-driven control interface.



Construction

- Volumetric single screw feeder with horizontal discharge
- Feed hopper with horizontal agitator, including v-clamp and seal to mount accessories
- Voludrive controller for DC motors to 500W
- Operating voltage: 230/1/50-60 Hz
- Color: Light gray RAL 7035

Distinct Features

- Compact construction
- Stainless steel material contact surfaces
- Material seals manufactured from Teflon and silicone
- Easy removal and cleaning of components with unique fastener system
- Maintenance-free gears eliminate down time
- Simple installation with base plate

Dosing Performance

		S					F				
		Spiral Screw					Auger Screw				
Gear	rpm	Ø 50 x 50 dm ³ /h	Ø 43 x 80 dm ³ /h	Ø 30 x 32 dm ³ /h	Ø 20 x 20 dm ³ /h	Ø 15 x 15 dm ³ /h	Ø 50 x 70 dm ³ /h	Ø 50 x 50 dm ³ /h	Ø 32 x 32 dm ³ /h	Ø 17 x 17 dm ³ /h	
7:1	8 – 617	20 – 1380	60 – 4600	5 – 400	2 – 140	1 – 45	65 – 5350	45 – 3500	15 – 900	1 – 60	
15:1	4 – 288	10 – 640	30 – 2150	3 – 180	1 – 65	1 – 20	35 – 2500	25 – 1630	5 – 420	1 – 25	
28:1	2 – 154	5 – 340	15 – 1140	2 – 100	1 – 35	1 – 10	20 – 1330	10 – 870	3 – 220	1 – 15	
Gear	rpm	Ø 50 x 25 dm ³ /h	Ø 43 x 40 dm ³ /h	Ø 30 x 16 dm ³ /h	Ø 20 x 11 dm ³ /h	Ø 15 x 11 dm ³ /h		Ø 50 x 25 dm ³ /h	Ø 32 x 16 dm ³ /h	Ø 17 x 11 dm ³ /h	
7:1	8 – 617	10 – 580	25 – 1850	5 – 160	1 – 55	1 – 30		20 – 1530	5 – 370	1 – 35	
15:1	4 – 288	5 – 270	10 – 640	1 – 75	1 – 25	1 – 15		10 – 710	2 – 175	1 – 15	
28:1	2 – 154	2 – 140	5 – 340	1 – 40	1 – 15	1 – 8		5 – 380	1 – 90	1 – 9	

Optional Equipment

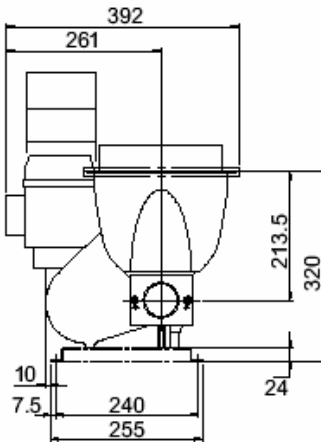
Accessories/Options

- Hopper extension modules
- Dust tight filters
- Vertical outlet tubes
- Extended screws 100/150/200 mm
- Frequency speed control for AC motors

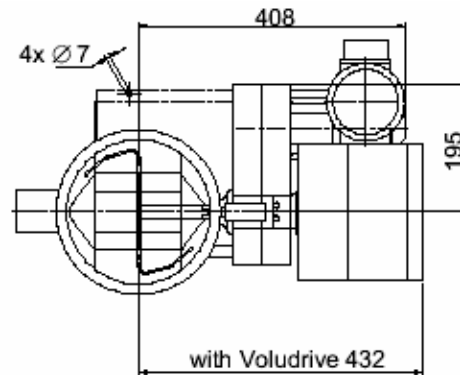
Installations

- Stand alone volumetric feeder or integrated with other feeding devices
- Continuous or batch feeding
- Gravimetric control integration

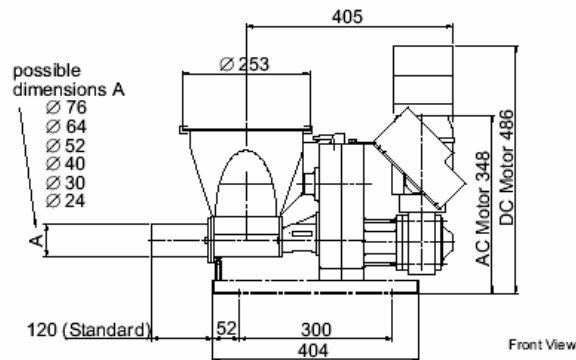
Drawings



Side View



Top View



Front View

Technical Data

DC Motor

- Motor size: 0.375 kW
- Voltage: 180 VDC
- Maximum speed: 1,800 RPM
- Motor class: IP 54
- Speed Reducers: 7:1 / 15:1 / 28:1

AC Motor

- Motor size: 0.375 kW
- Voltage: 230-460/3/50-60 Hz
- Maximum speed at 60Hz: 1,750 RPM
- Motor Class: IP 54
- Speed Reducers: 7:1 / 15:1 / 28:1
- Weight: 75 lbs. (35 kg)
- Feed hopper volume: 0.2 cu. ft. (6.1 liters)

www.colortronicna.com

Corporate Headquarters:

Colortronic North America, Inc.
4100 Market Place
Flint, MI 48507
PH: 810-720-7300
FX: 810-720-2598
colortronicweb@corpemail.com

Dimensions and data not binding. Copyright by Colortronic 2004.