

CVL Series Compressed Air Loaders

Colortronic's compact CVL loaders are designed to provide trouble-free conveying using compressed air. These highly efficient, self-contained loaders use compressed air and an efficient venturi to draw material from drums, bins, material bags, or gaylords. The material is drawn through the venturi under vacuum and then conveyed into the receiver using pressurized air. The material is separated from the air stream and is deposited into the bin or process machine. An efficient filtering system is used to capture material fines before air is exhausted into the plant. A simple control assembly is easy to operate and makes this loader a good choice for many single loading material conveying applications. Choose the configuration that is correct for your application.



CVL-A and CVL-B Series Standard Features

- Receiving hopper for material
- Standard flange with quick release fasteners
- Control assembly with low power consumption solenoid - 115/1/50-60 Hz
- Air filter/regulator combination with pressure gauge
- Capacitive sensor for material demand with 16.4 foot (5 meter) quick disconnect cable to control venturi/wand assembly with quick connect air line fittings
- 3/8" Poly house air line -10 ft.
- 1-1/4" standard vinyl flexible hose -10 ft.
- Two hose clamps for 1-1/4" vinyl flex hose

CVL-C Series Standard Features

Same features as CVL-B plus the following:

- Second venturi/wand assembly with quick connect air line fittings
- 1-1/4" O.D. wye-tube with coupler to attach to material inlet on receiving hopper
- Additional 3/8" poly hose air line -10 ft.
- Additional two hose clamps for 1-1/4" vinyl flex hose
- Additional control assembly for second venturi assembly including air regulator with pressure gauges

CVL-D Series Standard Features

- Drum fill evacuation system
- Mobile drum stand on casters (two locking/two swivel) with adjustable arm and filtered 22" diameter drum cover
- Control assembly with low power consumption solenoid - 115/1/50-60 Hz
- Capacitive sensor for material demand (inside drum) with 16.4 ft. (5 meter) quick disconnect cable venturi/wand assembly with quick connect air fittings
- 1-1/4" standard vinyl flex hose – 10 ft.
- Two hose clamps for 1-1/4" vinyl flex hose
- 3/8" poly hose air line – 10 ft.

Optional Features

- Direct mount flange (with remote mount level sensor)
- Bin mount flange adapter with CSR O6-45 bolt circle (level sensor mounted to flange) ¹
- Sight glass assembly for machine mount of CVL loader with sensor mounted to glass assembly ¹
- Torpedo magnet for sight glass assembly ¹
- Dust bag kit with tube in lieu of standard filter for dusty regrinds (not available for CVL-A loader) ¹
- Universal adapter for grinder take-off attachment to fit up to 2" O.D. material line connection (slips over existing tube stub)
- 230/1/50-60 voltage

¹ These options are not available on CVL-D model

Corporate Headquarters:

Colortronic North America, Inc.
4100 Market Place
Flint, MI 48507
PH: 810-720-7300
FX: 810-720-2598
colortronicna.com
colortronicweb@corpemail.com

CM1-555

Specifications

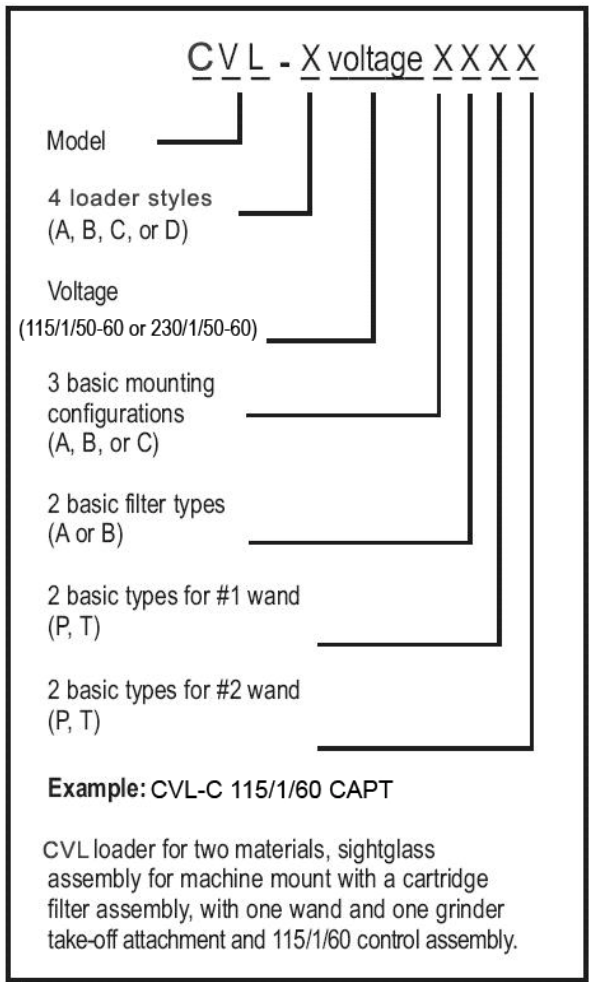
Model	Maximum Throughput, Lbs./hr (kg/hr) ¹	Shipping Weight ² , Lbs. (kgs)	Operating Voltage (watt)	Noise Level, dbA	Max. Conveying Distance feet (meters)	Compressed Air Supply, PSI (bar)	Compressed Air Consumption, scfm (l/min)	Vacuum Performance HzO (kPa)	Typical Comp. Air Consumption scfm (l/min); psig (bar)	Max. Product Temp., F° (C°)	Optional Sight Glass Cap., cu. ft. (liters)
CVL-A	475 (215) ³	16.6-20.6 (7.5-9.3)	115/1/50-60 (2 watt)	75	Horizontal – 30 (9.14)	70-90 (5-6)	25.9 (733) (Based on 100% continuous use)	-42" (-11)	8-10 scfm @ (227-283) 80 psig based on 30% duty cycle for intermittent use	176 (80)	.005 (.140) .20 lb
CVL-B		19.8-23.8 (9.0-10.8)									
CVL-C		29.6-33.6 (13.4-15.2)									
CVL-D		125.0 (56.7)									

¹ Maximum throughput of material is based on conveying typical materials at close distances (beside the press)

² All weights include 10 lbs. for packing materials.

³ Maximum conveying distance, feet (meter) = horizontal 30 (9.14), vertical 12 (3.7)

Model Naming Matrix



Model Description

CVL-A – Pellets Only (single inlet)

The CVL-A is a single inlet venturi loader used to convey clean, pelletized material into a process. Price includes one pick-up material probe and single inlet control assembly. 115VAC.

CVL-B – Pellets or Regrind (single inlet)

The CVL-B is a single inlet venturi loader used to convey clean pellets or regrind material into a process. Price includes one pick-up device and single inlet control assembly. 115 VAC.

CVL-C – Pellets or Regrind (two inlet)

The CVL-C is a single inlet venturi loader with a special wye tube attachment that allows conveying of two materials (usually a virgin and regrind material) into a process. Price includes two pick-up devices and dual inlet control assembly. 115 VAC.

CVL-D – Pellets or Regrind (drum fill evacuation system)

The CVL-D is a mobile stand with a single inlet conveying pellets or regrind to fill material drums. Price includes drum stand, one pick-up device, filtered drum cover and single inlet control assembly.

CVL-D – Drum fill evacuation system with premium control option

Same features as standard CVL-D plus enhanced control. Control features include:

- Remote capacitive sensor with removable 20ft patch cord to mount in grinder bin
- Local sensor in barrel to indicate barrel high level
- Low power consumption solenoid
- Manual operation feature of solenoid for manual loading
- Alarm light - visual alarm
- Alarm horn - audible alarm
- Adjustable fill time of unload cycle
- Energy-saving fill time for timed fill cycle and pause until grinder high level is obtained
- Alarm on barrel full – high level condition
- Alarm on grinder and barrel full – high level condition
- No load alarm
- Adjustable no load alarm counter
- Alarm silence
- Power cord
- Control mounted to barrel fill stand
- Specify voltage

Body Type: (1st position of model number)

- A: Single inlet for clean pellets ONLY
- B: Single inlet for pellets or regrind
- C: Single inlet tank with WYE tube inlet two materials
- D: Drum fill station with one inlet for pellets or regrind

Mounting: (3rd position of model number)

- A: Direct Mount (Less Flange Options - Standard)
- B: Bin Mount flange adapter (with CSR 06-45 bolt pattern)
- C: Sight glass assembly for machine mount

Wand Selection: (5th and 6th positions of model number)

- P: Pickup Vertical Wand
- T: Takeoff Horizontal Attachment

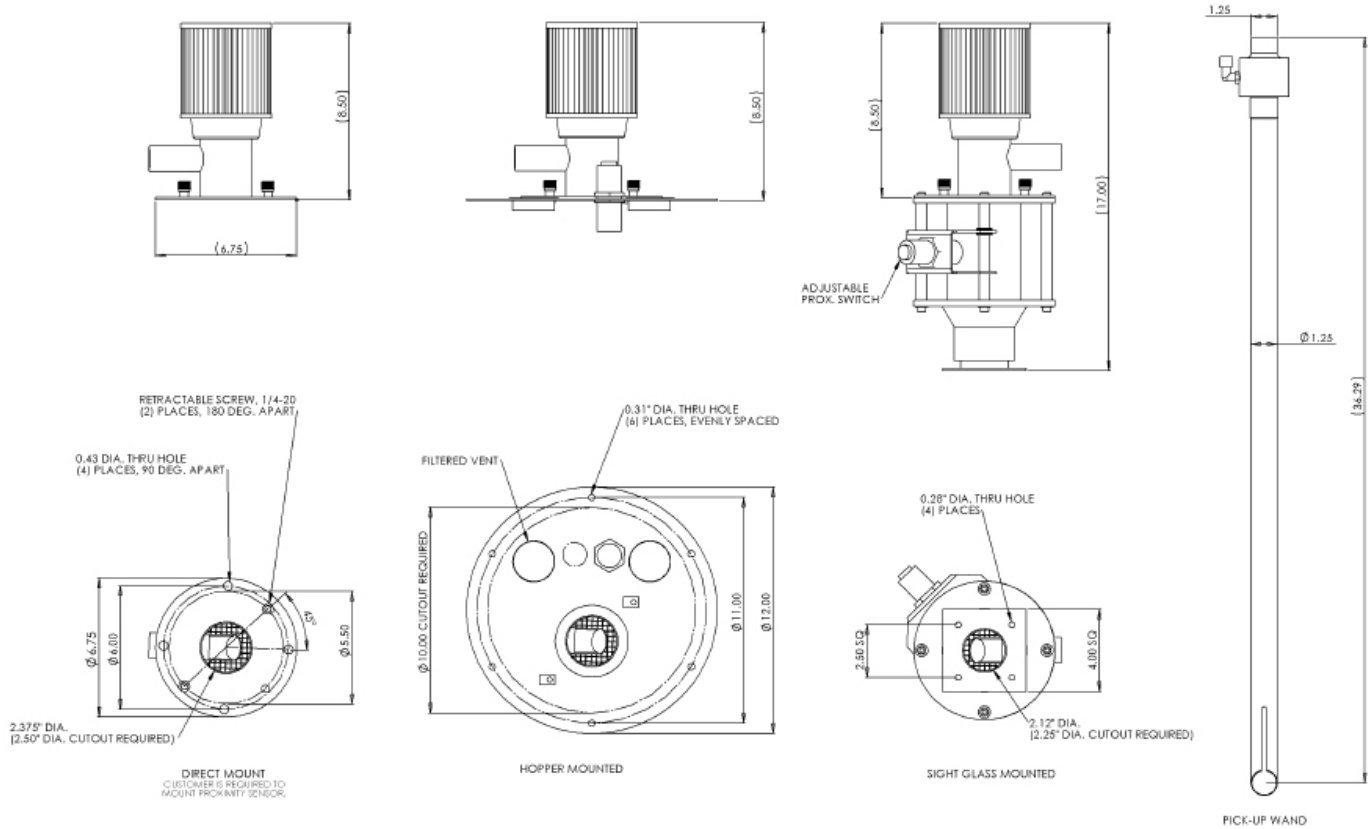
Voltage: (2nd position of model number)

- 110/1/50: 115/1/60 VAC Control Assembly
- 220/1/50: 230/1/60 VAC Control Assembly

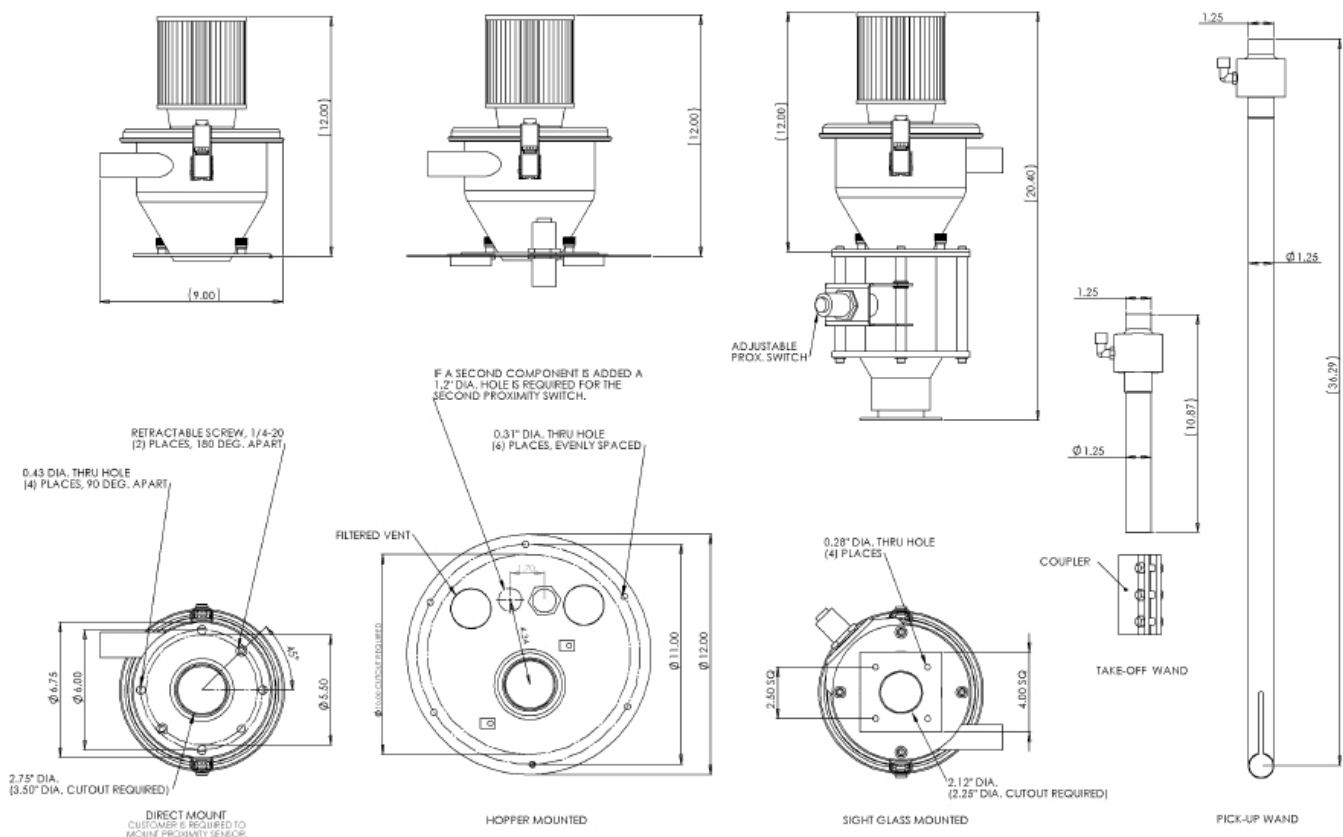
Filter: (4th position of model number)

- A: Cartridge Filter for pellets and clean regrind
- B: Dust bag kit with tube in lieu of standard filter for dusty regrinds (not available on CVL-A model)

CVL-A Specifications – One Material Conveying (Clean Pellets Only)

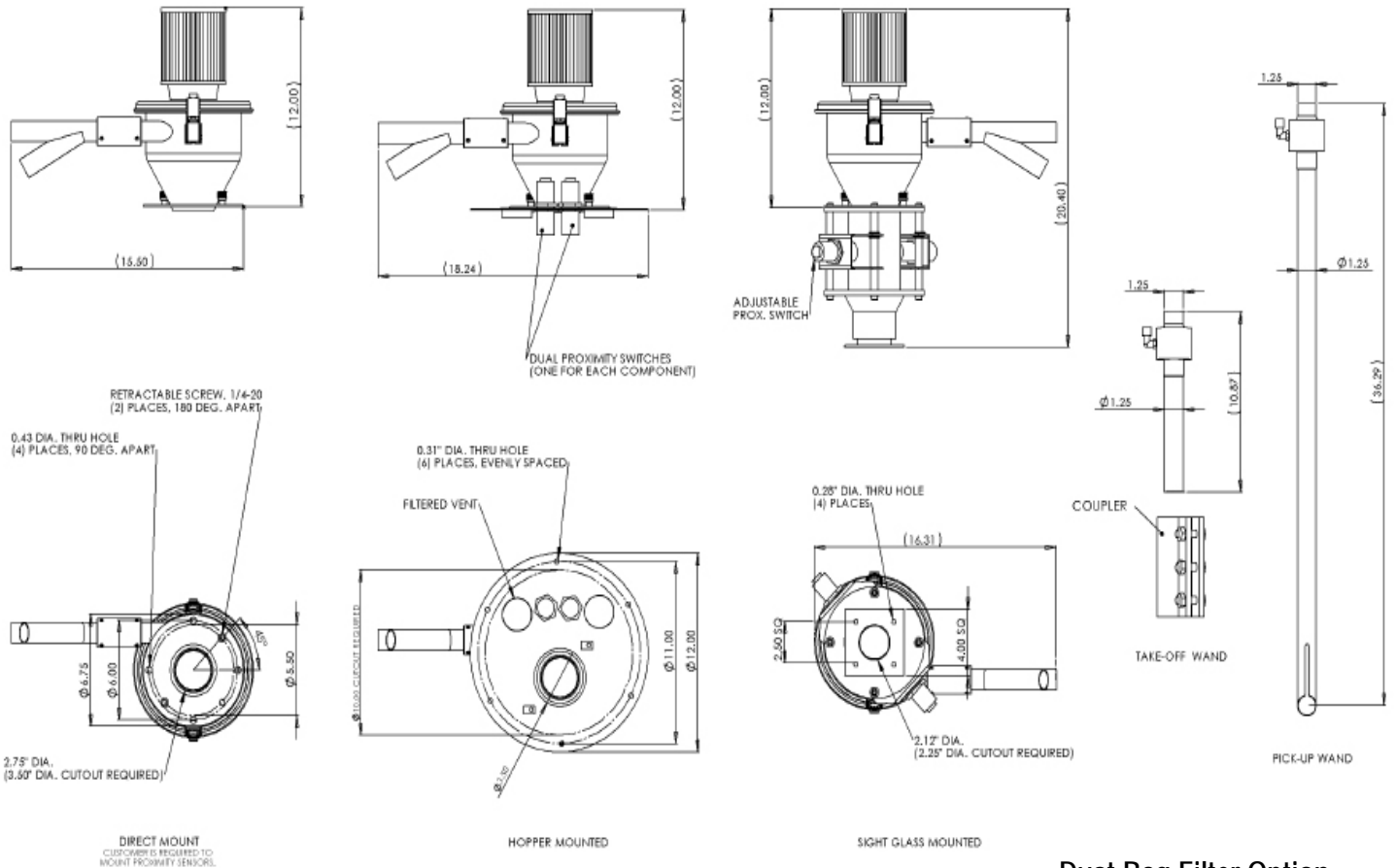


CVL-B Specifications – One Material Conveying (Pellets or Clean Regrind)



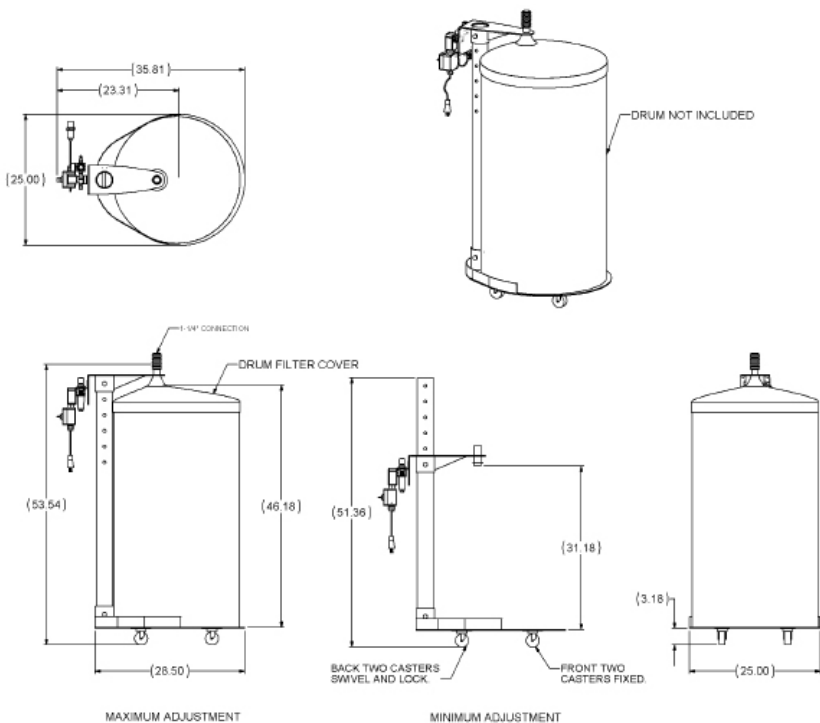
Note – Grinder or take-off tube connection is 1.25" O.D.

CVL-C Specifications – Two Material Conveying



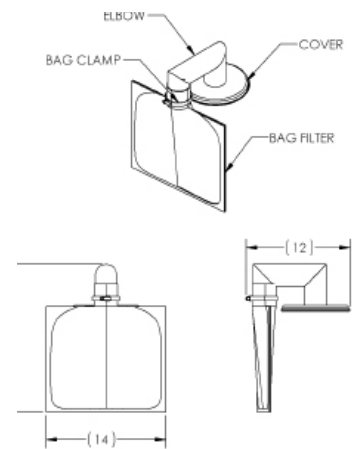
Note – Grinder or take-off tube connection is 1.25" O.D.

CVL-D Specifications – Barrel/Drum Fill Systems



Note – Grinder or take-off tube connection is 1.25" O.D.

Dust Bag Filter Option



Universal Take-Off Adapter

