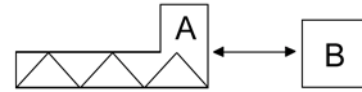


Typical Application of a Twin Screw Feeder in a Dosing System.

A Twin Screw Feeder  
 B Motor Control



Component A is described below

**CT65 Volumetric Twin Screw Feeder**

Colortronic's volumetric single screw feeder CT65 is ideally suited for dosing powders, pellets, granulates, regrinds, fibers, and flakes in continuous and batching processes. The compact modular design gives the operator the flexibility to meet changing process requirements.

Volumetric feed rates range 2-570 cubic feet per hour. The horizontal agitator constantly keeps material in motion, thus eliminating bridging and maintaining consistent screw fill. All material contact surfaces are manufactured from corrosion resistant stainless steel. Colortronic's Voludrive controller offers the operator full access to all feeder parameters through an icon driven control interface.



**Standard Features**

- Volumetric twin screw feeder with horizontal discharge
- Feed hopper with horizontal agitator, including v-clamp and seal to mount accessories
- Voludrive controller for DC motors to 750 W
- Operating voltage: 230/1/50-60 Hz
- Compact construction
- Stainless steel material contact surfaces
- Material seals manufactured from Teflon and silicone
- Easy removal and cleaning of components with unique fastener system
- Maintenance free gears eliminate down time
- Simple installation with base plate

**Optional Features**

- Hopper extension modules
- Dust tight filters
- Vertical outlet tubes
- Extended screws 100/150/200 mm
- Frequency speed control for AC motors
- Stand alone volumetric feeder or integrated with other feeding devices
- Continuous or batch feeding
- Gravimetric control integration

**Performance**

Screw Type		C	F		
				Twin concave Profile	Twin auger screw
Gear	Speed min <sup>-1</sup>	Ø 60x80 l/h	Ø 55x64 l/h	Ø60x80 l/h	Ø 51x50 l/h
15:1	24-456	294-5586	135-2572	434-8244	178-3379
28:1	13-244	159-2989	73-1376	235-4412	96-1808

The given throughput data refer to approximate values and is based on measurements with PS-reference granule, free flowing, with a bulk density of 1.1 kgs/l. The performance data for other materials may be different and is subject to individual testing.

## Technical Data

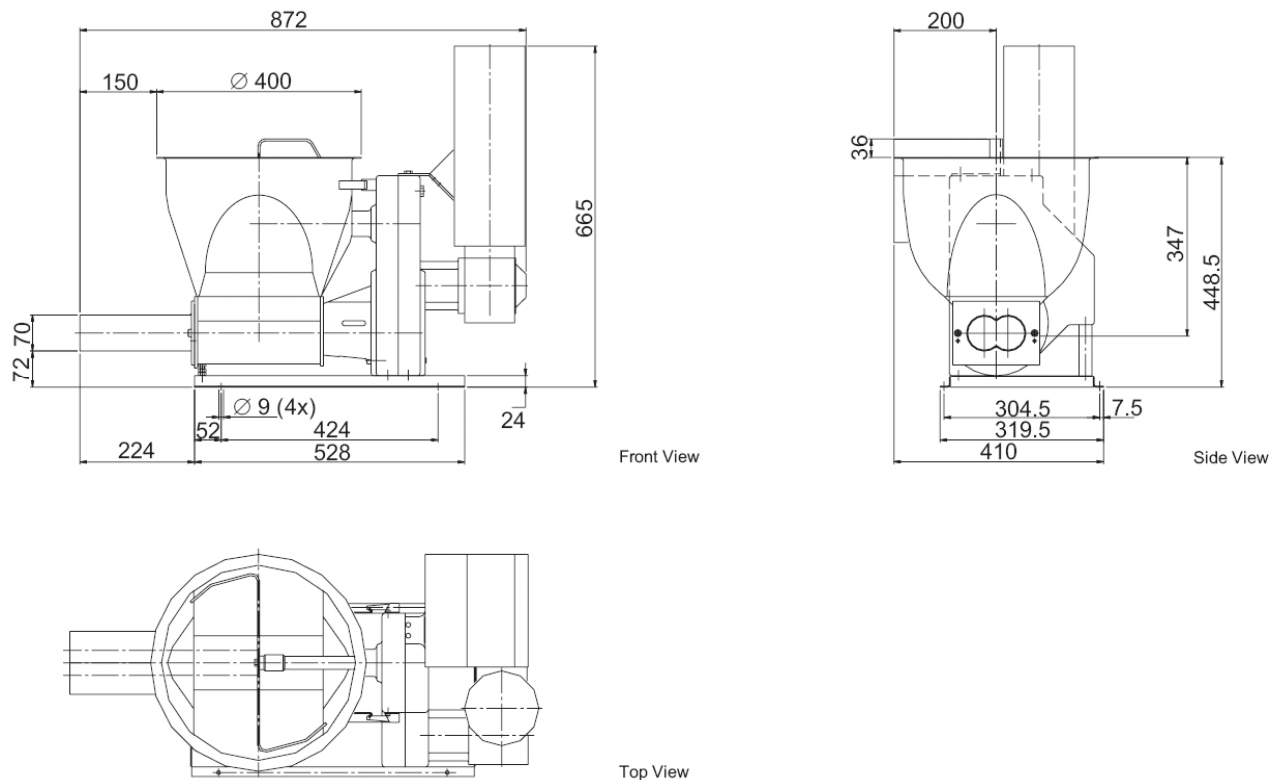
### DC Motor

Motor Size: 0.75 kW  
 Voltage: 180 VDC  
 Maximum Speed: 1,800 RPM  
 Motor Class: IP 54  
 Speed Reducers: 7:1 / 15:1

### AC Motor

Motor Size: 0.75 kW  
 Voltage: 230-460/3/50-60 Hz  
 Maximum Speed at 50Hz: 1,410  
 Maximum Speed at 60 Hz: 1,750 RPM  
 Motor Class: IP 54  
 Speed Reducers: 7:1 / 15:1  
 Weight: 165 lbs (75 kgs)  
 Feed Hopper Volume: 25.5 liters (0.9 cu. ft)

## Drawing



[www.colortronicna.com](http://www.colortronicna.com)

### Corporate Headquarters:

**Colortronic North America, Inc.**  
 4100 Market Place  
 Flint, MI 48507  
 Tel. 810-720-7300  
 Fax. 810-720-2598  
[colortronicweb@corpemail.com](mailto:colortronicweb@corpemail.com)

**Colortronic Systems AG**  
 Hunzenschwil, Switzerland  
 Tel: +41 62 689 25 25  
 Fax: +41 62 689 25 26  
[info@colortronic.ch](mailto:info@colortronic.ch)

**Colortronic Systems GmbH**  
 Friedrichsdorf, Germany  
 Tel: +49 61 75 7 92 167  
 Fax: +49 61 75 7 92 284  
[ctsystems@colortronic.de](mailto:ctsystems@colortronic.de)