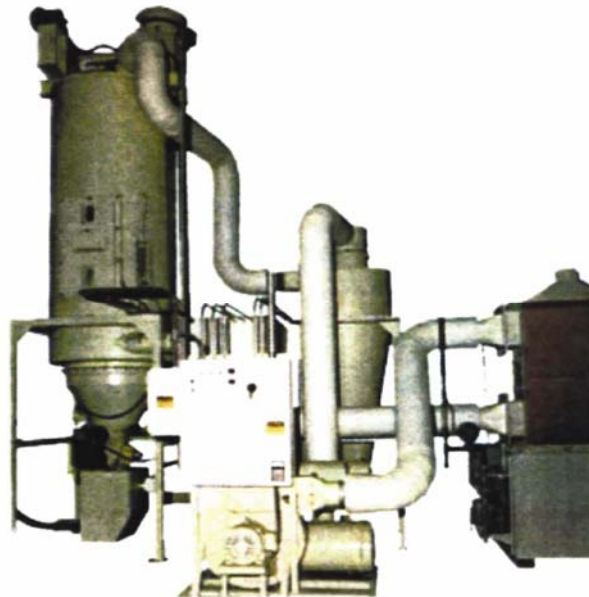

Brief Description

Colortronic's CCL Series crystallizers are used to crystallize amorphous material in a continuous process. Slow speed agitation of the material prevents agglomeration and minimized product degradation.

CCL Series resin crystallizers are engineered for each application. Consult factory for lead time and price. All gasket material is capable of withstanding process air temperatures in excess of 350° F.

Standard features:

- Agitated hopper with floor stand
- High temperature (400°F maximum) blower and heater assembly
- Fully insulated, mild steel hopper
- Hinged door with sight glass
 - Safety interlock
- High and low level sensors
- Mid-level thermocouple
- Heavy-duty drive and agitator arm assembly designed for 5 rpm
- Rotary air lock
- Surge hopper with high level shut down
- Duct work for typical installation
- Relay control logic
- 460/3/60
- Requires positive shut-off vacuum receiver to load crystallizer
- Two position take-off box is recommended



Colortronic CCL Series resin crystallizers are engineered for each application.

Consult factory for lead time and price.

CCL Series closed loop crystallizers are designed to crystallize amorphous material at continuous throughput. Slow speed agitation of the material prevents agglomeration and reduces product degradation. All gasket material is capable of withstanding process air temperatures in excess of 350°F (177°C).

Options

- Gas-fired air heater
- Dust collection system (in addition to cyclone)
- Stainless steel hopper construction
- Mezzanine mount hopper
- Dual hinged access doors
- Additional sight glass
- Mid-level sensor
- Additional thermocouple (specify position)

Model	CCLxxxx					
	90	180	270	450	660	900
Dimensions and Specifications						
Maximum throughput, lbs. /hr	90	180	270	450	660	900
Hopper capacity; cu. ft. (liter)	5 (140)	10 (285)	15 (425)	25 (710)	37 (1050)	50 (1415)
Dryer size, CFM (m ³ /h)	85 (145)	185 (315)	255 (430)	400 (680)	600 (1015)	750 (1270)
Duct size, in inches	4	4	4	6	6	6

Model	CCLxxxx			
	1350	1800	2700	4000
Dimensions and Specifications				
Maximum throughput, lbs. /hr	1,350	1,800	2,700	4,000
Hopper capacity; cu. ft. (liter)	75 (2125)	100 (2830)	150 (4250)	C.F.
Dryer size, in CFM	1200 (2035)	1500 (2550)	2700 (4580)	N/A
Duct size, in inches	8	8	10	N/A