

## Brief Description

### Application

Modular takeoff boxes from Colortronic are designed for free-flowing materials and provide durable construction in a simple, modular design. The MTO Series takeoff boxes feature stainless steel construction with lightweight aluminum tube assemblies. The versatile modular design is compatible with a wide range of applications and allows for easy assembly and cleanout.

MTO takeoff boxes are available in single or multiple lines with styles including complete clean-out type with tapered bottom, or box type, which provides various material line takeoff configurations. All compartments have adjustable tubes or air/material balancing and a filter for air inlets.

Check the available clearance below flange, and make sure to pick the correct box type. Do not mix tube sizes without consulting the factory first. **Use MTO dual tube modular take-off boxes if you are conveying free-flowing materials up to 200 equivalent feet.**

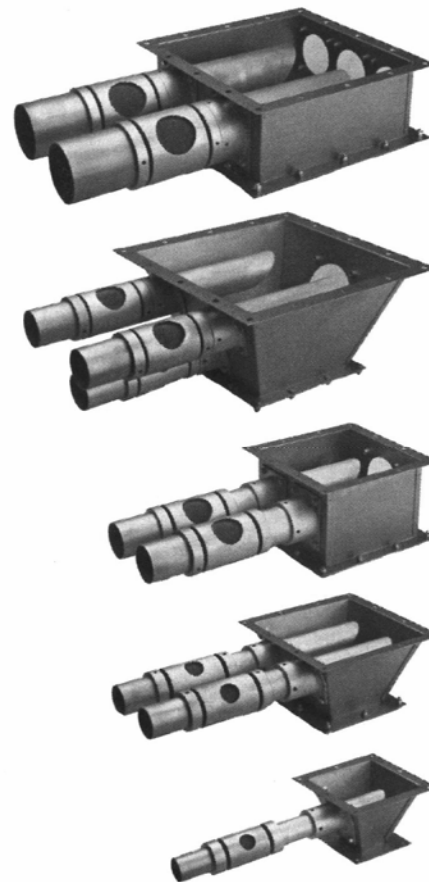
MDT dual tube models are designed for hard to flow materials, such as flakes or powders, or for conveying free-flowing materials over 200 equivalent feet. Maximum three (3) box stack up allowed (consult factory).

### Standard Features

- Stainless steel box
- Aluminum tubes
- Material viewport on body styles A, B, and C
- Available sizes: 16" (406 mm), 10" (254 mm), and 7" (178 mm) – square flanges.

### Options

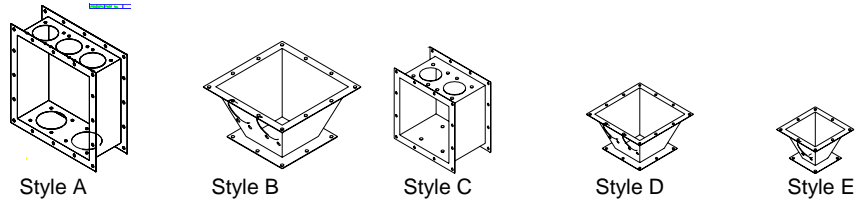
- Material clean-out gate
- Blank plate
- Adapter plate to mate to 7" x 7" or 9" x 9 square flange drying hoppers
- Take-off tubes: 1.5", 2", 2.5", 3", 3.5", 4"
- Dual tube models for regrind and non-free-flowing materials
- Consult factory for dry-air conveying applications or powder conveying applications



MTO Modular Take-Off Boxes



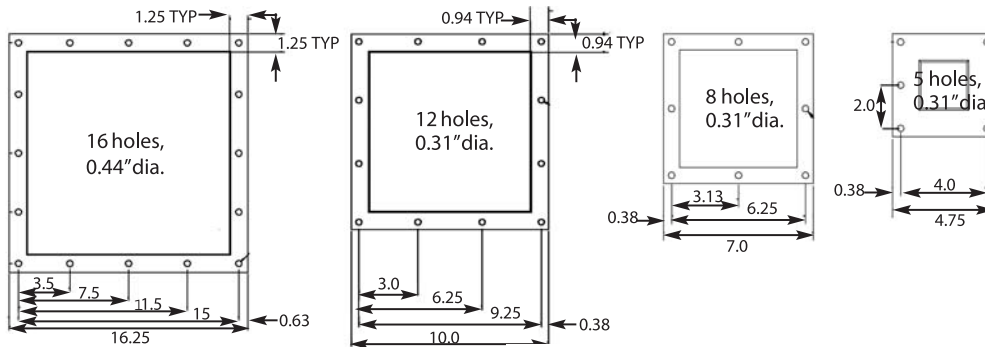
Typical MTO Style Material  
Tube Assembly



**Specifications**

Style	Square Flange Size, in. (mm)	Height, in. (mm)	Bolt pattern		Number of tubes per MTO box					
			Top	Bottom	1.5"	2.0"	2.5"	3.0"	3.5"	4.0"
A	16 (406)	6 (152)	16 holes	16 holes	3	3	3	3	3	2
B	16, 10 (406, 254)	8 (203)	16 holes	12 holes	3	3	3	1	1	1
C	10 (254)	6 (152)	12 holes	12 holes	2	2	2	1	1	N/a
D	10, 7 (254, 178)	5.5 (140)	12 holes	8 holes	2	2	2	N/a	N/a	N/a
E	7, 4.5 (178, 114)	4.5 (114)	8 holes	5 holes	1	1	1	N/a	N/a	N/a

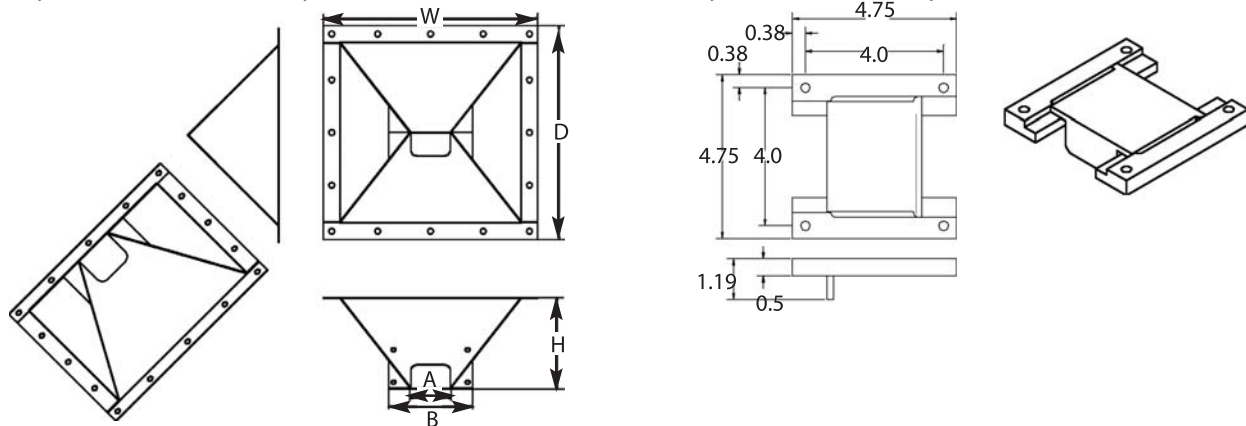
**Bolt Patterns**



**Clean-out Gates**

Style	H, in. (cm)	W, in. (cm)	D, in. (cm)	A, in. (cm)
A	6.94 (17.6)	16.25 (41.3)	16.25 (41.3)	3.14 (7.9)
B, C	4.31 (10.9)	10 (25.4)	10 (25.4)	3.06 (7.8)
D*	5.19 (13.2)	7 (17.8)	7 (17.8)	2.38 (6.1)

\*Style D takeoff boxes use a Style E takeoff box with a bottom-mounted Style E cleanout assembly.



[www.colortronicna.com](http://www.colortronicna.com)

**Corporate Headquarters:**

Colortronic North America, Inc.  
4100 Market Place  
Flint, MI 48507  
PH: 810-720-7300  
FX: 810-720-2598  
[colortronicweb@corpemail.com](mailto:colortronicweb@corpemail.com)