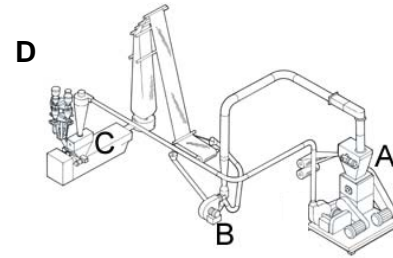


Typical Scrap Reclaim System

- A – Film Grinder
- B – Edge Trim Conveying System
- C – Fluff Feed Hopper
- D – Cyclone



Component B is described below

**Brief Description**

Colortronic VI Series edge trim conveying systems are used to convey edge trim to the film grinder. These systems include a high-pressure radial blade blower, an adjustable blower inlet damper with finger guard, a flanged outlet, and a high-efficiency venturi unit with adjustable venturi tube.

**Standard Features**

- Y-tube to connect to the blower venturi inlet
- Two (2) spun bellmouth pickups for field installation at the winder trim station
- One (1) 20 foot (6m) length of metal flex tube to be field-cut into three (3) pieces (based on specific installation to connect venturi, Y-tube and bellmouth pickups)
- Sized to convey medium slip edge trim up to 50 feet (15 m) to adjacent grinders
- 460/3/60 supply voltage



- ✓ Edge trim air exhausters (relief heads) are **not** included as standard; see options below.
- ✓ Motor starters are **not** included as standard; see options on next page.

Standard edge trim blower and venturi (dual blowers available)

**VI Series Equipment Selection**

**Blower Models**

Model number	Venturi	Model number	Venturi	Model Number	Venturi
5 HP (3.73 kw) (616-05FD)	3 x 6	10 HP (7.49 kw) (724-10FD)	4 x 8	20 HP (14.92 kw) (724-20FD)	4 x 8
7½ HP (5.59 kw) (628-07FD)	3 x 6	15 HP (11.19 kw) (724-15FD)	4 x 8	25 HP (18.65 kw) (832-25FD)	5 x 10

**VI Series Option Availability**

✓ denotes availability

**Motor Starter Options**

Equipment description	Availability
Remote or manually operated starter on blower - specify	✓

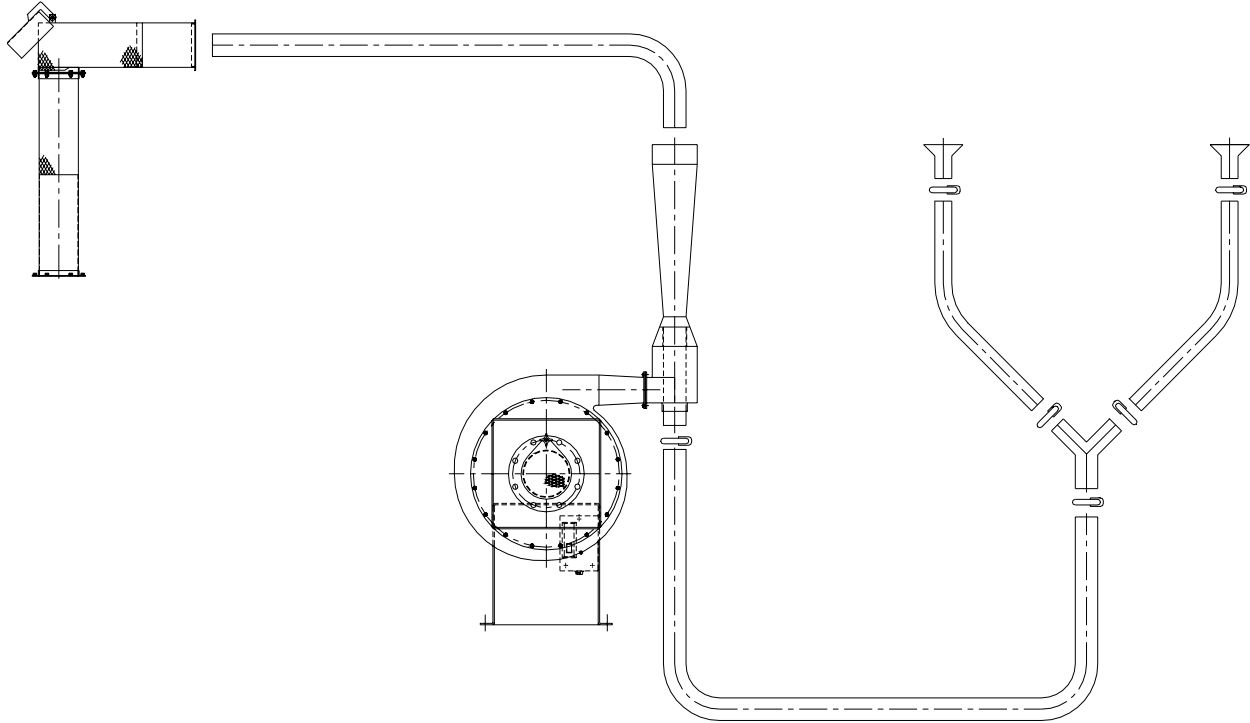
**Edge Trim Air Exhauster (Relief Head) Options**

Equipment description	Availability
◆ Size 6 (use with 5 & 7½ HP blowers)	✓
◆ Size 8 (use with 10 & 15 HP blowers)	✓
◆ Size 10 (use with 20 & 25 HP blowers)	✓

**System Options**

Equipment description	Availability
Inlet silencer enclosure on blower	✓
Sound enclosure	✓
Dual venturis	✓
Special voltage; <b>details required</b>	✓

## Typical VI Series Edge Trim Conveying System



**NOTE: Edge trim air exhaustor (relief head) is not included with the system, since it is usually supplied with the granulator. It is priced separately depending on the system design. However, it must be sized to match the air flow of the conveying blower.**

[www.colortronicna.com](http://www.colortronicna.com)

**Corporate Headquarters:**  
Colortronic North America, Inc.  
4100 Market Place  
Flint, MI 48507  
Tel. 810-720-7300  
Fax. 810-720-2598  
[colortronicweb@corpemail.com](mailto:colortronicweb@corpemail.com)

Dimensions and data not binding. Copyright by Colortronic 2005.