

M800 Series Beside-the-Press Granulators

The M800 Series granulators are designed for efficient beside-the-press regrind of reject components from injection molding, blow molding, and extrusion processes. Quiet-running and extremely versatile, they can be used with robot feed, conveyor feed or hand feed applications. These sound-attenuating granulators are available in three models—M810, 814, and 818. All provide excellent quality regrind with the added advantage of reduced maintenance costs.

Standard Features

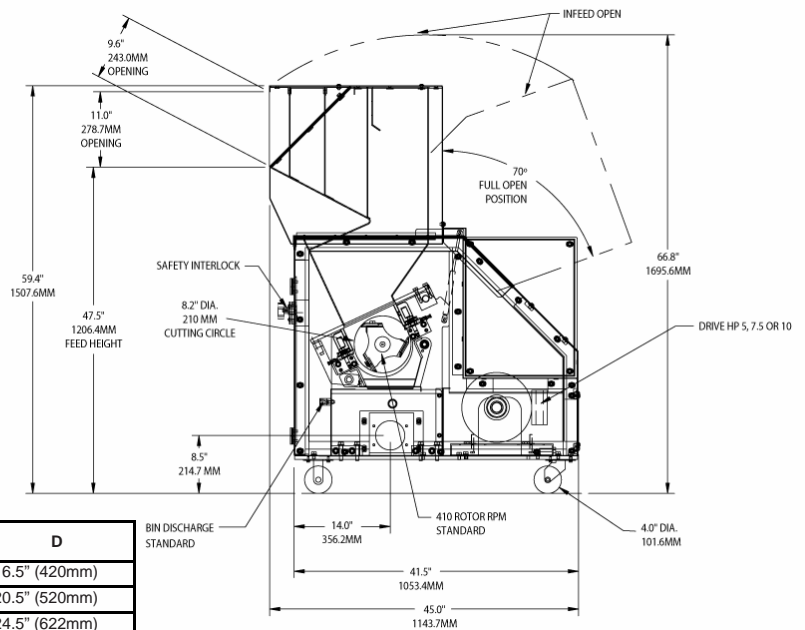
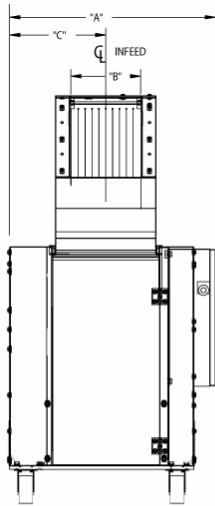
- Hopper
 - Hand, Feed hopper with Modular access points for feed chute installation
 - Sound attenuated
- Cutting chamber
 - Offset design, 2 bed knives
 - Machined, bolted, and doweled
 - Fully sound-attenuated to approximately 70-80 dBa
- 3-Knife Rotor
 - Open-scooped with rotating end discs
- Quick-Release Hand Knob Access
- Rotor and Bed Knives
 - D2 OEM manufactured
 - Proprietary Heat Treating Process
- Pivoting drop-down screen and screen cradle
 - ¼" standard, 3/16", 5/16", 3/8", and other sizes available
- 5 HP TEFC motor and solid flywheel drive
- Standard metal bin discharge

Optional Features

- Motor: 7.5 to 10 HP (5.5 to 7.5 kW) TEFC motors
- Discharges 1.25", 1.5", 2" or 2.5" vacuum take-off
- Knives
 - D2 components and wear-resistant package for abrasive applications
- Multiple modular feed chutes



Selector Guide			
Model	M810	M814	M818
Cutting Circle	8.2" dia. (210mm)		
Avg Throughput (lbs/hr)	123	172	221
Cutting Chamber	8" x 10"	8" x 14"	8" x 18"
Rotor Knives	3-knife open-scooped with rotating end discs		
Discharge	Manual bin standard		
Motor	5HP (3.75 kW) TEFC standard		
Base	Full machine sound enclosure with casters		
Electrical Components	Start/stop button, with complete safety interlocks		
Controls	NEMA type 12		
Feed Height (manual chute)	47.5" (1206mm)		
Feed Height (front robot/conveyor chute)	59.1" (1502mm)		
Feed Height (rear robot/conveyor chute)	68.6" (1742mm)		
Overall Height (manual chute model)	59.4" (1507mm)		
Overall Length	45.0" (1144mm)		
Overall Width	30.3" (770mm)	34.3" (871mm)	38.3" (973mm)
Weight	1220 lbs	1400 lbs	1610 lbs



Machine Model	A	B	C	D
810	30.3" (770mm)	10.2" (260mm)	14.3" (363mm)	16.5" (420mm)
814	34.3" (871mm)	14.2" (360mm)	16.3" (414mm)	20.5" (520mm)
818	38.3" (973mm)	18.2" (462mm)	18.3" (465mm)	24.5" (622mm)

www.colortronicna.com

Corporate Headquarters:
 Colortronic North America, Inc.
 4100 Market Place
 Flint, MI 48507
 PH: 810-720-7300
 FX: 810-720-2598
colortronicweb@corpemail.com

Dimensions and data not binding. Copyright by Colortronic 2007.