

The MT500 Tangential Series central granulators offer superior quality and performance with ease of accessibility. A safety interlocked, rear access, hopper door provides hassle-free cleanout and inspection, while the front hopper access door completely opens up for quick and easy maintenance with minimal downtime.

Available in 3- and 5- knife rotors, with high shear or steep angle rotors, the MT500 series encompasses the design elements for the widest variety of application needs. A side mount motor design permits drive motor to be right-hand or left-hand positioned and completely opens rear service area for maintenance and cleanout.

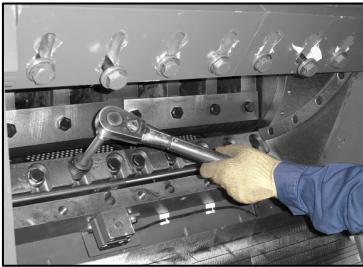


Standard Features

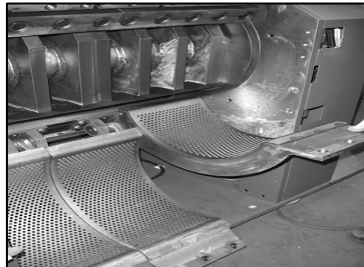
- The MT500 Series includes 712mm (28"), 915mm (36") and 1220mm (48") wide models for a wide range of applications
- Motor range includes 30kW (40hp), 37kW (50hp), 45kW (60hp), 55kW (75hp), and 75kW (100hp) TEFC motors
- Offset cutting chamber, 2 Twinshear™ bed knives, top access: single edge, HCHC
- Cutting chamber geometries are available for tangential, offset, and 3-bed knife orientations
- Standard configuration is sound suppressed, with option for fullsound enclosed configuration
- Large 500mm (20") cutting circle for enhanced part ingestion
- Discharge is right-hand or left-hand regardless of motor placement
- Innovative design creates enlarged screen area via segmented swing-down reversible screens which provides optimized accessibility, increased throughput and minimal clean out and maintenance access time
- Industry leading unique design enhances safety measures and
- creates easy serviceability
- Rotational side walls limit friction and smearing and improve
- granulate quality. Outboard bearing mounting increases bearing
- protection to the highest level, and eases maintenance steps
- Open wing rotor style enhances throughput while increasing cutting performance
- Mechanical rotor lock for maintenance
- Air purge bearings for cooling and contamination prevention

Optional Features

- Optional dual-flywheel structure for increasing performance via added cutting inertia



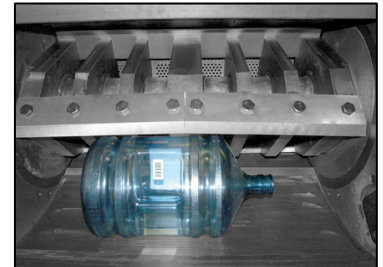
Ease of access and maintenance with front hopper access door



Cutting chambers are available for tangential, offset, and 3-bed knife configurations

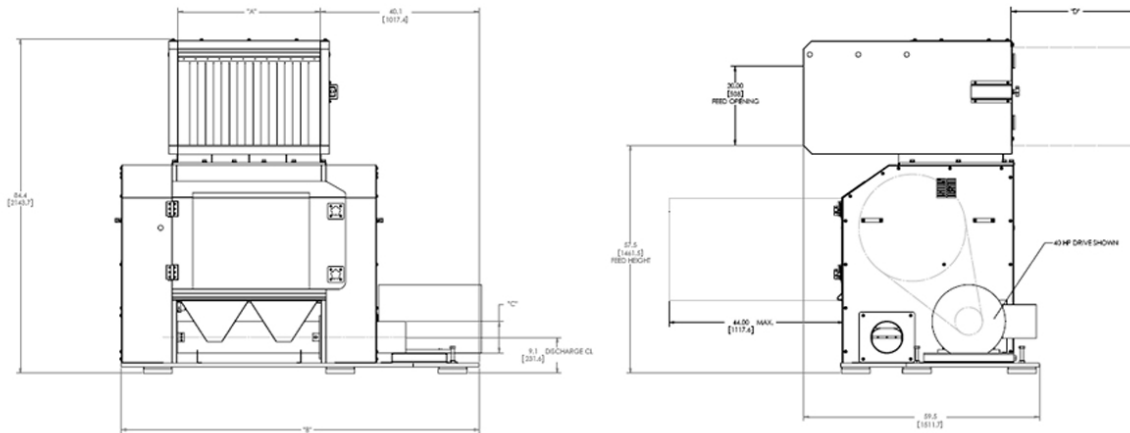


Standard tangential cutting chamber can be modified for bed knife placement to suit changing and demanding production requirements



Twin shear rotor configuration for superior and optimized part ingestion

Model	Cutting Chamber	Rotor	Motor	Throughput
MT-5070	508mm x 712mm (20"x28")	3 or 5 knife, open	30kW (40hp) std, 37kW (50 hp), 45kW (60hp), 55kW (75hp), 75kW (100hp) option	Up to 900 kg/hr (2000 lbs/hr)
MT-5090	508mm x 915mm (2"0"x36")	3 or 5 knife, open	37kW (50hp) std, 45kW (60hp), 55kW (75hp), 75kW (100hp) option	Up to 1350 kg/hr (3000 lbs/hr)
MT-50120	508mm x 1220mm (20"x48")	3 or 5 knife, open	55kW (75hp) std, 75kW (100hp) option	Up to 1575 kg/hr (3500 lbs/hr)



Dimensions (in, mm)				
Model	A	B	C	D
MT-5070	28" (712mm)	82.4" (2092mm)	6" (152mm)	38" (812mm)
MT-5090	36" (915mm)	90.4" (2295mm)	8" (200mm)	4" (1016mm)
MT-50120	48" (1220mm)	102.4" (2600mm)	10" (254mm)	52" (1320mm)

www.colortronicna.com

Corporate Headquarters:
Colortronic North America, Inc.
 4100 Market Place
 Flint, MI 48507 USA
 Phone: 810.720.7300
 Fax: 810.720.2598
 E-mail: colortronicweb@corpemail.com

Dimensions and data not binding. Copyright by Colortronic 2009.