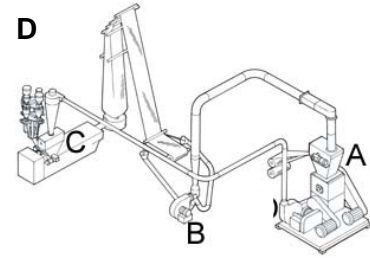


Typical Scrap Reclaim System

- A – Film Grinder
- B – Edge Trim Conveying System
- C – Fluff Feed Hopper
- D – Cyclone



Component C is described below

Brief Description

Application: CTE fluff feed hoppers are designed to feed edge trim back into an extruder at a maximum rate 20% of the extruder output. **NOTE: Cannot be used with grooved feed throats.**

All CTE Series fluff feed hoppers come standard with these common features:

- NEMA 12 enclosure
- Up to 20% re-feed rate ①
- Machine-mount flange
- Dependable auger metering
- Mild steel material contact surfaces
- IR compensation
- Vertical mix auger, horizontal fluff metering auger
- Extruder following signal isolator
- Individual voltmeters
- Horizontal and vertical drive DC motors (SCR) 180 VDC
- Individual speed adjustments on fluff auger and Verti-Blend mixer
- 230/1/60 supply voltage

CTE Series economy trim re-feed systems are designed to run at a set percentage of extruder speed (rpm). Signal isolation circuitry receives extruder tachometer signals to determine system speed. Each auger can be adjusted independently, using the controls on the front panel.

① Re-feed rate is based on feeding 1 mil, medium slip LDPE film scrap to a die limited extrusion system. If the system is limited by the extruder, some loss in output rate may occur when feeding higher percentages of fluff. **NOTE: Cannot be used with grooved feed throats.**



Technical Information

CTE Series Fluff Feed Hopper Equipment Selections

Model number	Extruder size (screw diameter)		Drive type
	Inches	mm	
250CTE	2.5"	63 mm	DC

CTE Series Fluff Feed Hopper Options

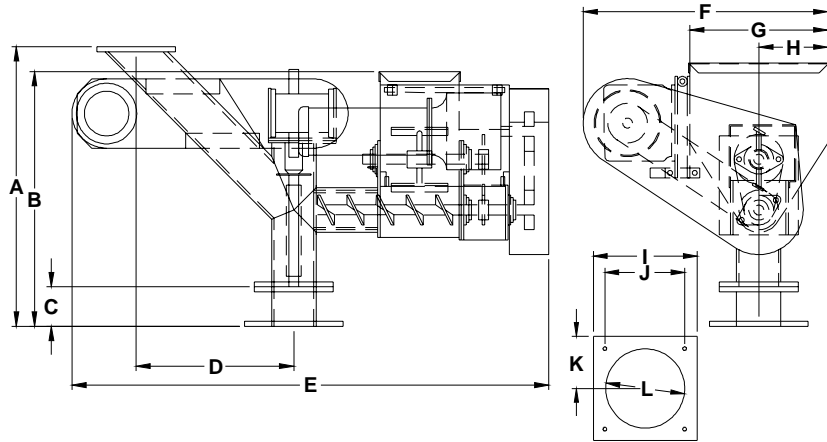
✓ denotes availability

Option description	Availability
Special voltage - Specify	✓
High level sensor with delay timer	✓
90° feed pedestal	✓
Special design feed pedestal	Consult factory
Fluff supply hopper with bottom clean-out door; includes safety switch	✓
Special mounting flange or throat adapter (extruder throat & flange drawings required)	✓
Special cyclone hole in fluff hopper cover (exact specifications required)	✓
Cyclone separators	See Bulletin No. CR5-515

CTE Series Auger Specifications

Model number	Horizontal auger				Vertical auger			
	Power HP	Power kw	Size/diameter Inches	Size/diameter Mm	Power HP	Power kw	Size/diameter inches	Size/diameter mm
250CTE	1/2	0.373	1 ⁵ / ₈ "	41.3	1/2	0.373	2 ¹ / ₂ " - 1 ³ / ₄ "	63.5 to 44.5

Typical CTE Series Fluff Feed Hopper



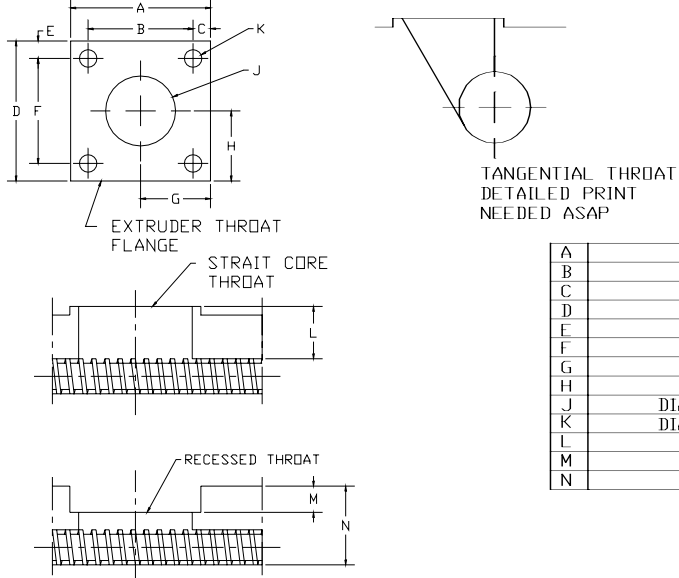
CTE Series Dimensions

Model number	Overall unit dimensions (cm is approximate)															
	A		B		C		D		E		F		G		H	
	in.	cm	in.	cm	in.	cm	in.	cm	in.	cm	in.	cm	in.	cm	in.	cm
250CTE	27 ³ / ₄ "	70	26 ¹ / ₈ "	66	4"	10	16"	41	47 ³ / ₈ "	120	19 ³ / ₈ "	49	8 ¹ / ₄ "	21	4 ¹ / ₈ "	10

Flange Dimensions

Model number	Unit flange dimensions (mm is approximate)							
	I		J		K		L	
	in.	mm	in.	mm	in.	mm	in.	mm
250CTE	8"	203	6"	152	4"	102	4" Ø	102 mm Ø

Required Customer Extruder Information *listed in table below must be provided with confirming order*



Make (manufacturer)		Model	
Serial No.		Screw Diameter	in/mm

www.colortronicna.com

Corporate Headquarters:
 Colortronic North America, Inc.
 4100 Market Place
 Flint, MI 48507
 Tel. 810-720-7300
 Fax. 810-720-2598
colortronicweb@corpemail.com

Dimensions and data not binding. Copyright by Colortronic 2005.