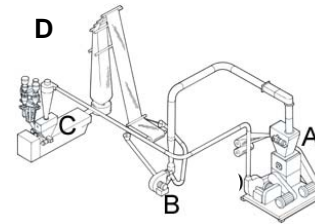


Typical Scrap Reclaim System

- A – Film Grinder
- B – Edge Trim Conveying System
- C – Fluff Feed Hopper
- D – Cyclone



Component C is described below

Brief Description

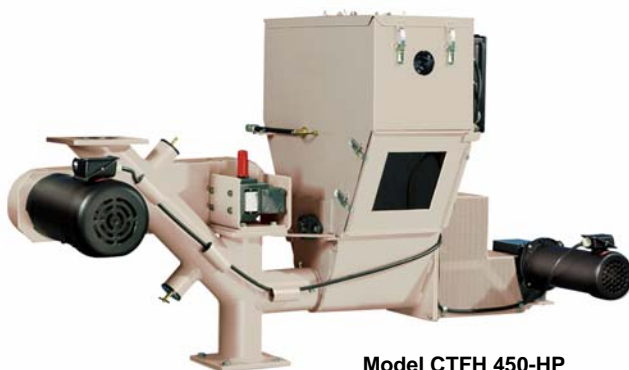
Colortronic fluff feed hoppers are designed to feed a percentage of the fluff directly back into the extruder throat. The unique dual-stage design ensures that the fluff is mixed with the virgin material above the extruder throat. Each auger is independently adjustable and can be set to follow the extruder screw speed by monitoring a tachometer signal from the extruder.

CTFH fluff feed hoppers are designed to feed edge trim and roll scrap back into an extruder at a maximum rate of 30% of the extruder output. The CFTH-HP is designed for those applications where scrap re-feed greater than 30% is common. **NOTE: Cannot be used with grooved feed throats.**

Standard Features

- NEMA 12 enclosure
- IR compensation
- Up to 30% maximum re-feed rate ①
- Dependable auger metering
- Machine-mount flange
- Mild steel material contact surfaces
- CTFH Series refeed systems are designed to run at a set percentage of current extruder revolutions per minute (rpm). Signal isolation circuitry receives extruder tachometer signals, determining system rpm.
- Independently-adjustable vertical mix auger and horizontal fluff metering auger
- Individual speed adjustments using variable-frequency drives
- Digital speed potentiometers
- Fluff hopper bridge breaker
- Extruder following signal isolator
- Horizontal and vertical drive Yaskawa (Magnetek) AC inverter-duty motors
- Optical level sensor with delay timer for field connection to grinder feed rolls and alarm device
- Ammeters for each drive motor
- Each auger (horizontal fluff feed and vertical mixing) can be adjusted independently, using the controls on the front panel.
- Supply Voltage:
 - CTFH models 300/450/600 - 230/1/60
 - CTFH models 800/1000 - 230/3/60

① Fluff feedback rate is based on a non-extruder limited line, recycling 1.25 mil medium slip LDPE film. Extruder speed increase may be required to obtain maximum quoted feed rate. If extruder is running 100% plasticizing capacity on virgin material, loss in output may occur during fluff feeding.



CTFH-HP Series High Performance Fluff Feed Hoppers

High performance CTFH-HP models are available to handle the toughest film scrap conditions. Yaskawa (Magnetek) flux vector (closed-loop vector) drive technology and a newly-designed re-feed pedestal combine to offer the very best fluff feeding performance available to the processor today.

Maximum CTFH-HP fluff re-feed rates are based on the ability of the screw design to accept additional fluff vs. standard CTFH units. Typical CTFH-HP fluff feed rates exceed 30% of extruder output and rates of 45% have been achieved. **Maximum fluff feed percentages will vary depending on material and equipment.**

All CTFH-HP Series fluff feed hoppers come standard with these **additional features**:

- New high performance “Verti-Blend” vertical feed auger incorporates vertical compaction and mixing design to allow the maximum fluff re-feed percentages possible
- Vertical side access door on pedestal for easier cleaning and maintenance
- Heavy-duty ICS100 gearbox assemblies
- Heavy-duty fan-cooled brushless VFD-compatible Vector duty motors (AC)
- MagneTek variable-frequency **Vector** drives (VFD) and systems
- 460/3/60 supply voltage
- Ammeters for each drive motor

Technical Information

CTFH Series Fluff Feed Hopper Selection

- CTFH350 handles 3.5” (90 mm) film extruders
- CTFH450 handles 4.5” (115 mm) film extruders
- CTFH600 handles 6” (150 mm) film extruders
- CTFH800 handles 8” (200 mm) film extruders
- CTFH1000 handles 10” (250 mm) film extruders

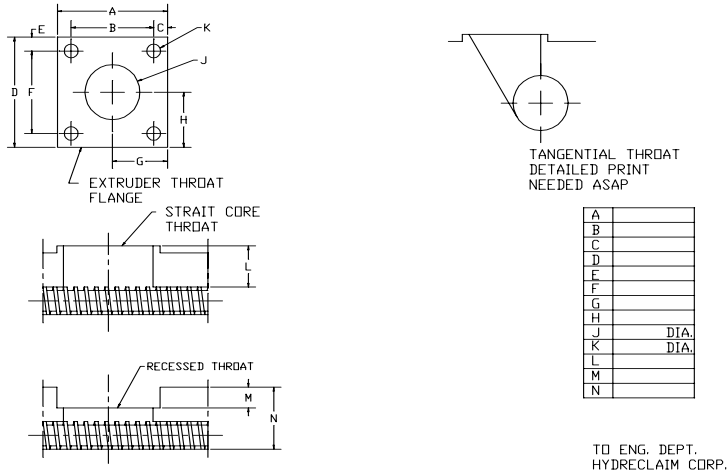
Model number	Extruder size (screw diameter)		Fluff hopper capacity		Standard mounting flanges		Drive type
	inches	mm	cu. ft.	liters	in. x in.	mm ²	
CTFH350	3.5	89	2	56	8	203	Delta VFD
CTFH450	4.5	114	3	84	8	203	
CTFH600	6	152	4	113	10½	266	
CTFH800	8	203	4	113	14	355	
CTFH1000	10	254	4	113	16	406	
CTFH450-HP	4.5	114	3	84	8	203	AC Flux Vector
CTFH600-HP	6	152	4	113	10½	267	
CTFH800-HP	8	203	4	113	14	356	
CTFH1000-HP	10	254	4	113	16	406	

CTFH and CTFH-HP Series Fluff Feed Hopper Available Options

✓ denotes availability

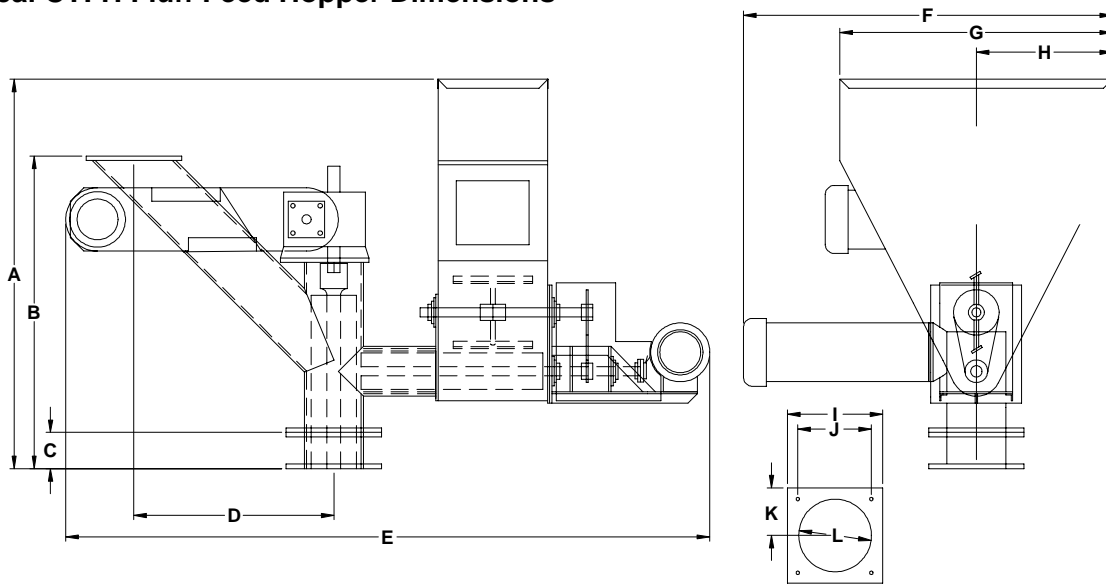
Option description	Availability
Special voltage – Specify	✓
90° feed pedestal	✓
Fluff hopper with bottom clean-out door; includes safety switch	✓
Special design feed pedestal	Consult factory
Special mounting flange or throat adapter (extruder throat & flange drawings required)	✓
Special cyclone hole in fluff hopper cover (exact specifications required)	✓
Cyclone separators	See Bulletin No. SM5-515

Customer Extruder Information listed in the table below must be provided with order



Make (manufacturer)		Model	
Serial No.		Screw Diameter	in/mm

Typical CTFH Fluff Feed Hopper Dimensions



CTFH Series Dimensions

Model number	Overall unit dimensions (cm is approximate)															
	A		B		C		D		E		F		G		H	
	in.	cm	in.	cm	in.	cm	in.	cm	in.	cm	in.	cm	in.	cm	in.	cm
CTFH350	32 ¹ / ₄	82	26 ⁵ / ₈	68	4	10	16	41	56 ⁵ / ₈	144	27 ⁵ / ₈	70	20	51	10	25
CTFH450	39 ⁷ / ₈	101	27 ³ / ₄	70	4	10	16	41	60 ⁵ / ₈	154	28 ¹ / ₈	71	24	61	12	31
CTFH600	43	109	34 ¹ / ₂	88	4	10	22	56	70 ⁷ / ₈	180	40 ⁵ / ₈	103	30	76	15	38
CTFH800	46	117	43	109	4	10	30 ³ / ₈	77	82 ⁵ / ₈	210	40	102	30	76	15	38
CTFH1000	45 ¹ / ₂	116	46	117	4	10	32 ¹ / ₂	83	88	224	37 ¹ / ₂	95	30	76	15	38

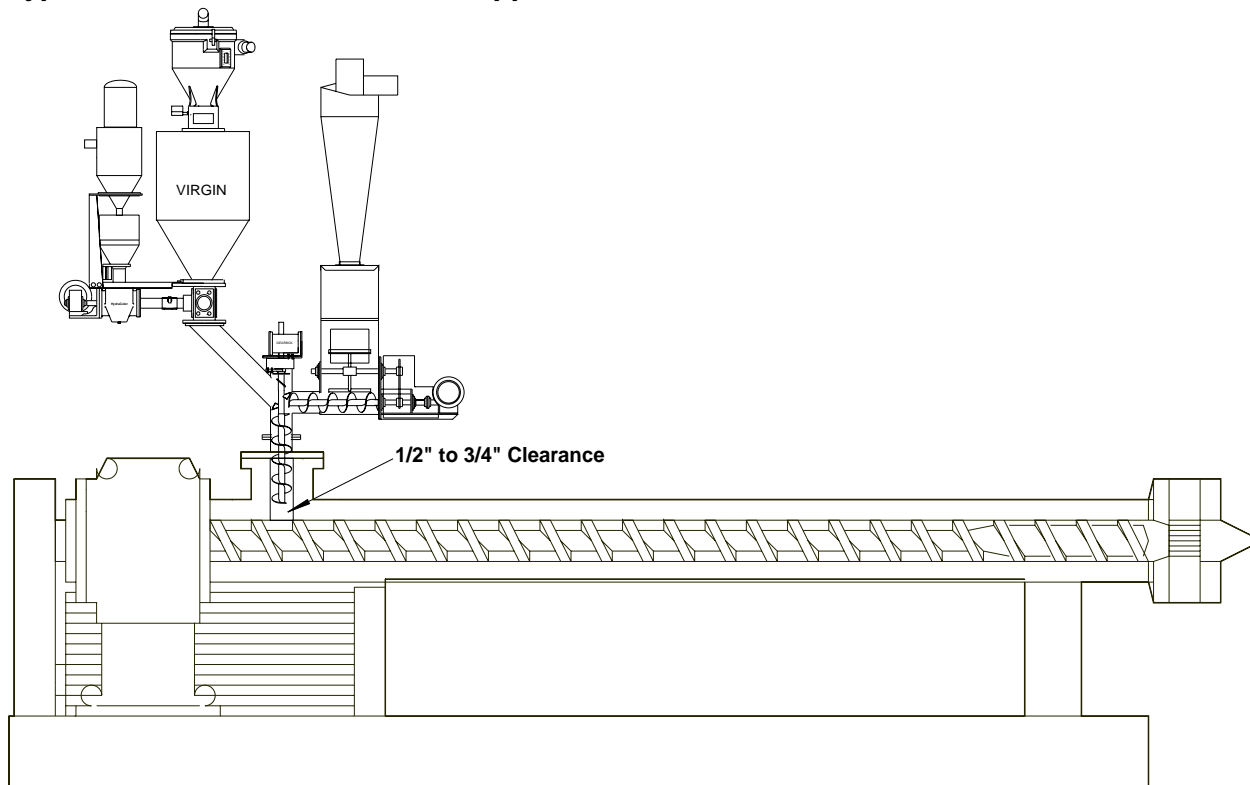
Flange Dimensions

Model number	Unit flange dimensions (mm is approximate)							
	I		J		K		L	
	in.	mm	in.	mm	in.	mm	in.	mm
CTFH350	8	203	6	152	4	102	4 Ø	102 Ø
CTFH450	8	203	6	152	4	102	4 Ø	102 Ø
CTFH600	10 ¹ / ₂	267	8	203	5 ¹ / ₄	133	6 Ø	152 Ø
CTFH800	14	356	12	305	7	178	8 Ø	203 Ø
CTFH1000	16	406	14	356	8	203	10 Ø	254 Ø

CTFH Series and CTFH-HP Series Auger Specifications

Model number	Horizontal auger				Vertical auger			
	Power		Size/diameter		Power		Size/diameter	
	HP	kW	inches	mm	HP	kW	inches	mm
CTFH350	$\frac{3}{4}$	0.373	2	41	$\frac{3}{4}$	0.559	2 $\frac{1}{2}$	63 mm
CTFH450	$\frac{3}{4}$	0.559	3	76	2	1.119	3 $\frac{1}{2}$	88 mm
CTFH600	2	1.492	4	101	2	1.492	4 $\frac{3}{4}$	120 mm
CTFH800	3	2.238	6	152	3	2.238	5 $\frac{3}{4}$	146 mm
CTFH1000	3	2.238	6	152	5	3.730	8	203 mm
CTFH450-HP	2	1.492	3	76	3	2.238	3 $\frac{1}{4}$	82 mm
CTFH600-HP	3	2.238	4	101	5	3.730	5 $\frac{1}{4}$	133 mm
CTFH800-HP	3	2.238	6	152	5	5.595	6 $\frac{1}{2}$	165.1 mm
CTFH1000-HP	5	3.730	6	152	10	7.460	8	203.2 mm

Typical CTE or CTFH Fluff Feed Hopper Installation



www.colortronicna.com

Corporate Headquarters:

Colortronic North America, Inc.
4100 Market Place
Flint, MI 48507
Tel. 810-720-7300
Fax. 810-720-2598
colortronicweb@corpemail.com

Dimensions and data not binding. Copyright by Colortronic 2005.