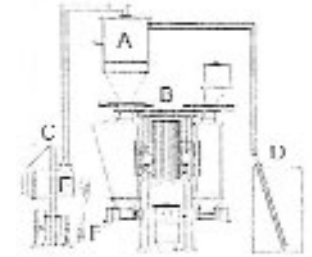


Typical structure of a disc dosing system.

- A Dosing Control
- B Dosing System
- C Printer

Component A is described below.



Brief Description

Application

Colortronic single conveying units are designed for use in facilities in which a centralized conveying system cannot yet be realized.

The CSE 15 / CSE 30 single conveying unit has been developed for conveying thermoplast granules, a typical area of application being for medium to large injection molding machines, extrusion systems, internal silos and drying hoppers.

Rugged, modular construction

The single conveying system consists of a stainless steel conveying hopper and a controller module with an integrated vacuum pump. The conveying hopper integrates a high performance filter with automatic filter cleaning.

The control is based on an easy to use standard PLC and is available for different vacuum pump performances.



Technical Information

Basic Version

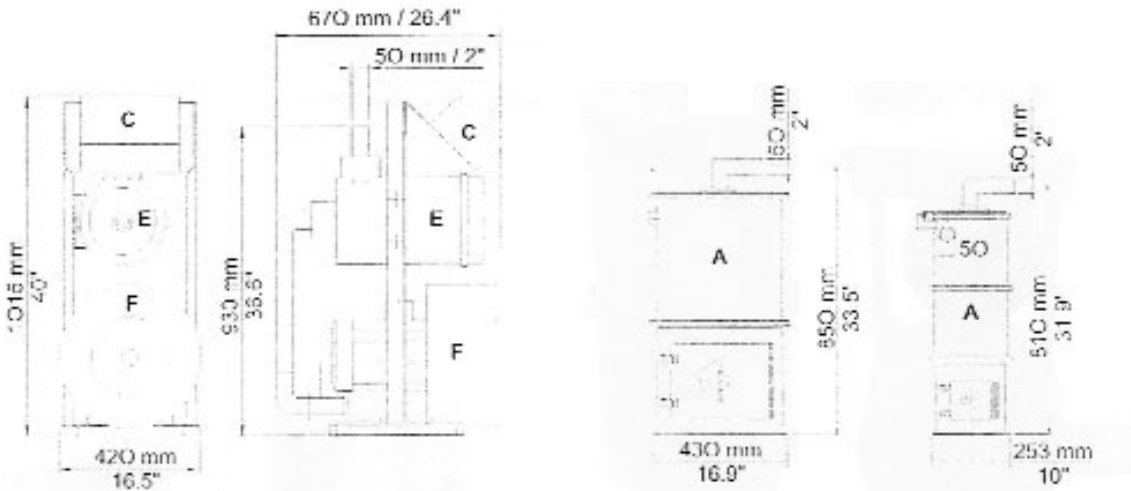
- Conveying hopper made of stainless steel (A)
- Control based on a standard PLC (C)
- Safety filter for vacuum pump (E)
- Vacuum pump 1.5 kW (F)

Optional Features

- Vacuum pump 2.2 kW (replaces standard pump)
- Vacuum pump 4.0 kW (replaces standard pump)
- Extension modules with volumes of 25 liters and 50 liters (CSE 30)
- Special voltage

Performance

- Maximum conveying capacity
CSE 15: max. 750 kg/hr (1650 lbs/hr)
CSE 30: max. 3000 kg/hr (6600 lbs/hr)
- Hopper loader capacity approx.
CSE 15: 15 liters (0.53 cu. ft.)
CSE 30: 30 liters (1.06 cu. ft.)
CSE 30 with extension module 25: 55 liters (1.94 cu. ft.)
CSE 30 with extension module 50: 80 liters (2.82 cu. ft.)
- Connected load
230/400 V, 50/60 Hz, 1.5 kW
230/400 V, 50/60 Hz, 2.2 kW
400/690 V, 50 Hz, 4.0 kW



www.colortronic.com

Corporate Headquarters:

155 9th Avenue, Suite A
Runnemede, NJ 08078
PH: 856-312-9600
FX: 856-312-9696
ctusa@colortronic.com

Spare Parts Stocking and Regional Service Centers:

780 Milliken Avenue, Suite C
Ontario, CA 91761
FX: 909-390-8143

10606 Widmer
Lenexa, KS 66215
FX: 913-327-1969

100 Roddy Avenue
South Attleboro, MA
FX: 508-399-6306

800 N Wood Dale Road
Wood Dale, IL 60191
FX: 630-595-8924