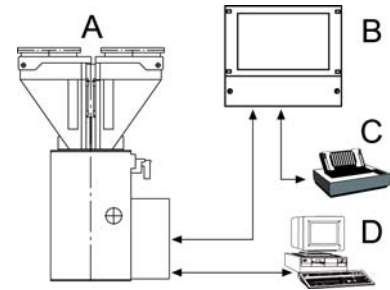


Typical application of a gravimetric batch blender.

- A Gravimetric Batch Blender
- B Control Unit
- C Printer
- D Host

Component A is described below.



Brief Description

Colortronic's gravimetric batch blender Ultrablend 95 is ideally suited for blending granulates, additives and regrinds.

High dosing accuracy and consistency improves end product quality and saves money by using less additives and reducing scrap. The Ultrablend 95 is specially designed for direct mounting on small injection molding machines and extruders. All products are dosed and weighed one after another into a weigh hopper supported by a single load cell. Once all components are weighed, they are passed to the mixing chamber where they are homogenized before exiting the blender.

- Ultrablend is easy to maintain and designed for continuous, 24 hour operation.
- Ultrablend meets the European "CE" requirements

Rugged, modular construction

Gravimetric batch blender for up to four components. Stainless steel material contact surfaces. The product is weighed with a single load cell. The vertical slide gate design improves accuracy and results in a compact design. The modular construction for extension hoppers and conveying system integration guarantees high flexibility.



Technical Data

Basic Version

- Up to 4 dosing components
- Weigh hopper volume: 0.053 cu. ft. (1.5 liters)
- Mixer volume: 0.16 cu. ft. (4.5 liters)
- Dosing hopper volume: 0.22 cu. ft. (6.25 liters)
- Maximum throughput
(2 components, free flowing
granulate, density 0.6 kgs/l): 573 lb/h (260 kg/h)
- Operating voltage: 115/230 VAC, 50/60Hz
- Air pressure: 6 bar
- Weight (4 components): 121 lbs (55 kgs)
- Control unit UB Touch

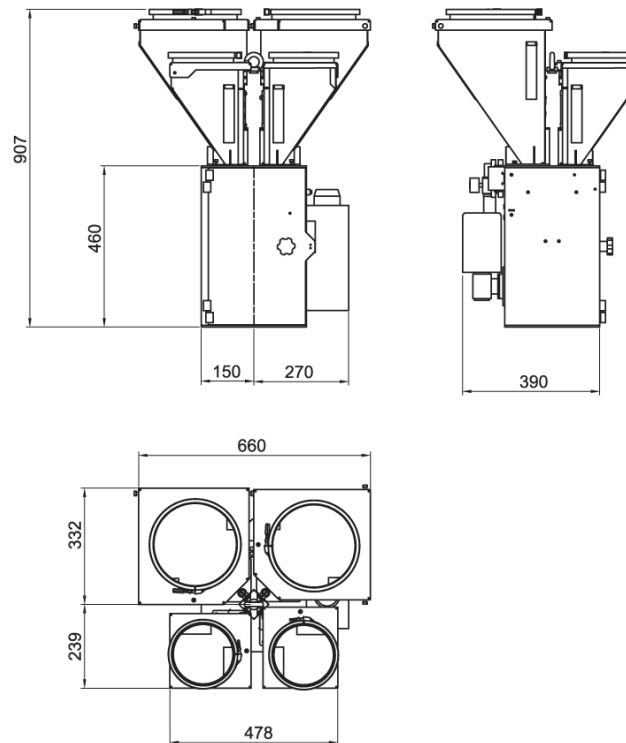
Optional Equipment

- Capacitive level sensor for mixer
- Manual or pneumatic slide gate under blender
- Level sensor control of slide gate below the blender
- Hopper extension modules
- Conveying systems
- Level sensors in dosing hoppers
- Machine adapters
- Special voltages

Versions

- Dosing hopper SV-S for granules and regrind
0.21 cu. ft. (6 l), max. 120 g/s
- Screw feeder DS05 for granules and regrind
0.88 cu. ft. (25 l), max. 270 g/s

Dimensions



www.colortronicna.com

Corporate Headquarters:

Colortronic North America, Inc.
4100 Market Place
Flint, MI 48507
Tel. 810-720-7300
Fax. 810-720-2598
colortronicweb@corpemail.com

Dimensions and data not binding. Copyright by Colortronic 2005.