

CVT Series Positive/Negative Pressure TCU

Troublesome cooling circuit leaks in processes can result in serious production losses. The leaks may be due to small stress cracks, which leak under pressure. Our CVT Series Positive/Negative Pressure TCU uses a liquid venturi to draw cooling water through the mold under negative pressure.

Precise temperature control is provided by the operation of a solid state or microprocessor controller, which activated a heater or a cooling water solenoid as required.

Standard Features

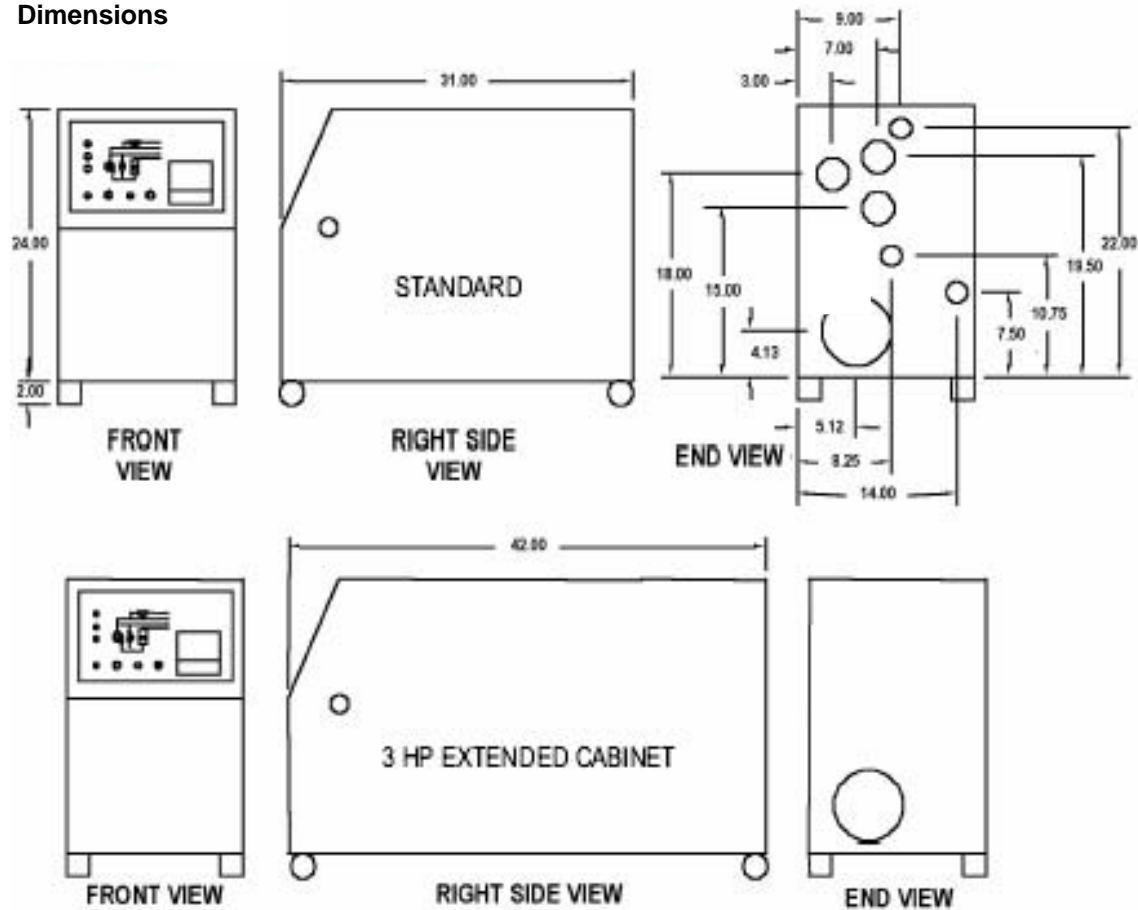
- Off-the-shelf microprocessor-based PID temperature control with Process and Set Value LED readout
- Graphic control panel with indicating and warning status lights
- Operating range of 32° F to 180° F (0° C to 82° C)
- Open reservoir vented to atmosphere
- Single stage Incoloy® immersion heater with mercury contactors
- ¼" cooling solenoid valve (Cv=0.85)
- High/low level sensor with 3/8" makeup solenoid valve
- Low supply water pressure switch
- 150 psi (1,034 kPa/10.3 bars) pressure relief valve
- 2" (51 mm) casters
- ¾" cooling water connections
- Manually-operated 3-way valve for changeover to negative pressure mode
- Horizontally-mounted bronze fitted centrifugal pump
- 1-year warranty on parts
- 5-year warranty on controller
- Lifetime warranty on pump housing, impeller, heater tube, piping
- 460/3/60 or 230/3/60 standard operating voltage
- 9 kW heater



Optional Features

- Remote control enclosure (see next page for details)
- Remote thermocouple (10 ft.), remote sensor must be sold with the high temperature safety switch option
- Rubber feet in lieu of casters
- High temperature safety switch
- High/low temperature audible and visual alarm, no heater contactor interlock, visual alarm is a strobe
- Crash cool, holds cooling solenoid on, turns heater off regardless of control setting
- 208/230/460 volt 60 Hz, 200/208/380/415 50 Hz, consult factory for de-rated heater and pump capacities
- Pressure gauge (specify locations)
- Power cord, 10 ft., no plug
- Paint internal piping
- Closed circuit with open reservoir
- 0.375" solenoid valve (Cv=1.5) in lieu of 0.25" valve
- Modulating valve, 0.5" (Cv=4.4), 0.75" (Cv=7.5), 1" (Cv=10 or 14), or 1.25" (Cv=20), includes VDC actuator. mA actuator is also available. Consult factory for maximum operating ΔP for cooling water

Dimensions



Remote Control Enclosure Option

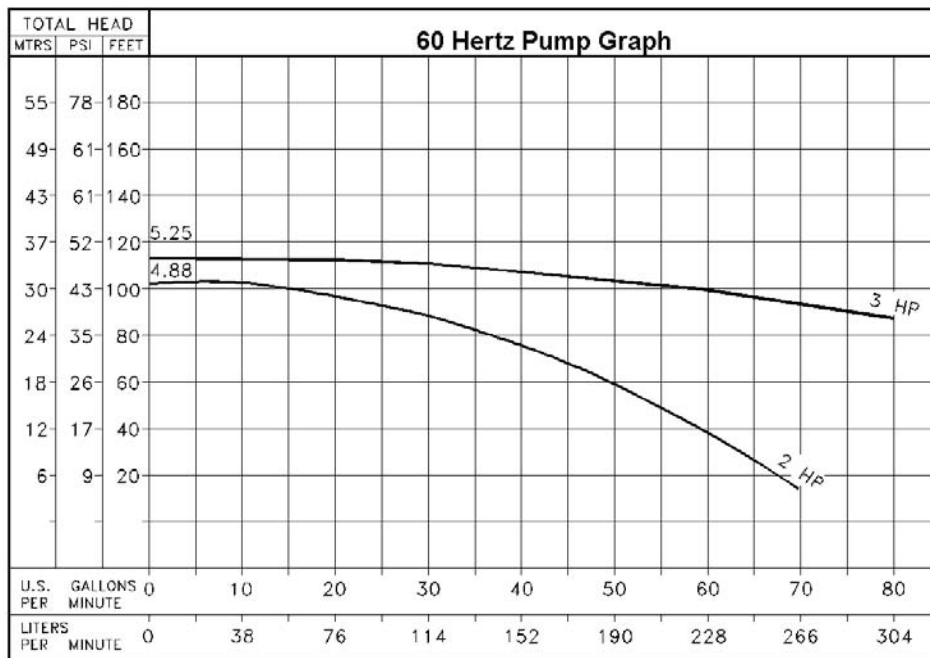
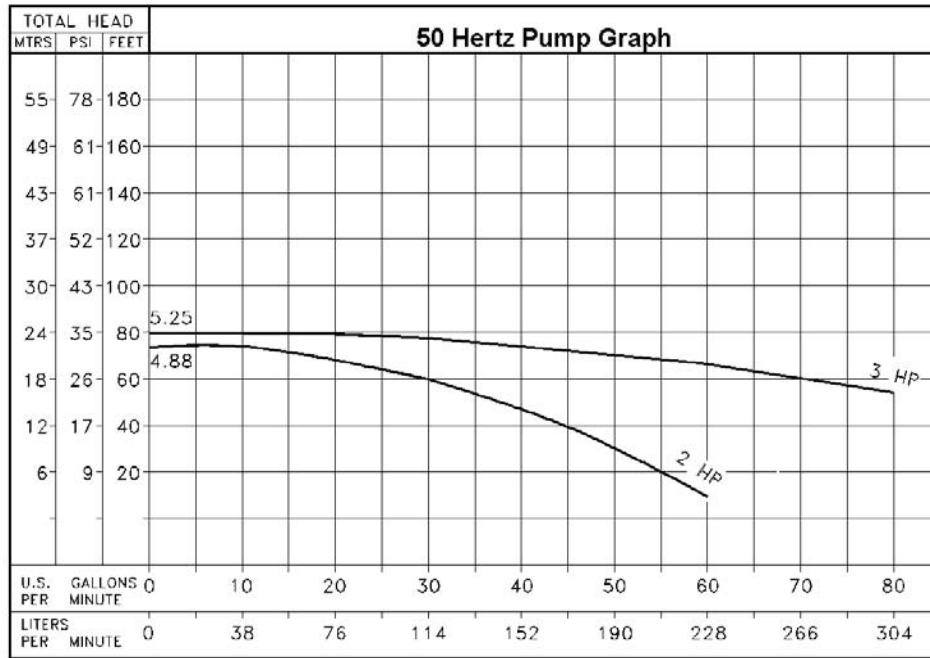
The remote control package includes NX control in remote enclosure, terminal blocks on temperature controller electrical enclosure sub-panel and remote enclosure sub-panel with 10 ft. shielded thermocouple extension wire.

Customer is responsible for installing electrical wiring between enclosures per applicable codes and standards.

www.colortronicna.com

Corporate Headquarters:

Colortronic North America, Inc.
4100 Market Place
Flint, MI 48507
PH: 810-720-7300
FX: 810-720-2598
colortronicweb@corpemail.com



-Notes-

www.colortronicna.com

Corporate Headquarters:
Colortronic North America, Inc.
4100 Market Place
Flint, MI 48507
PH: 810-720-7300
FX: 810-720-2598
colortronicweb@corpemail.com

Dimensions and data not binding. Copyright by Colortronic 2004.