

### Water Tower Management System

Untreated cooling tower water can rob your process cooling system heat transfer efficiency and cooling capacity. Colortronic has the answer. Our model TWMV280 Tower Water Management System provides four-way protection for tower sizes up to 700 tons—all in one compact, fully automatic package that's nearly maintenance free. The TWMV280 is shipped with all the components pre-mounted and pre-plumbed. All components are mounted on a 33" x 33" enameled steel panel. Once the system is mounted, plumbing completed, and power supplied, the TWMV280 is ready for operation.

#### Standard Features

- Full automatic control includes a programmable “menu-driven” electronic controller with 2-year warranty protection
- Factory-assembled, complete with self-priming peristaltic pumps
- Preset before shipment to precisely match the tested conditions of your application
- Quarterly analysis provided by Colortronic
- 5 gallons (19 liters) of biocide
- 5 gallons (19 liters) of scale and corrosion inhibitor (selection based on water analysis)
- Branch fusing
- ¾" water supply, 1.5" process connections, valve size matches drain size
- Four separate treatment processes:
  - Monitors make up water flow and meters an accurate blend of scale and corrosion control agents into the tower system.
  - Prevents biological fouling by “slug” feeding microbiocide at predetermined intervals.
  - Automatically removes suspended solids by means of a centrifugal separator coupled to a solenoid valve.
  - Automatically regulates the concentration of dissolved solids by using a conductivity meter, which acts as the separator purge.

#### Optional Features

- Heavy-duty filtration, sand and gravel filters or full-flow bag filters
- Organo phosphonate test kit, used to verify proper chemical feed levels
- Chloride test kit, used to verify proper bleed-off operation
- Centrifugal separator #9050
- Probe & feed assembly #9990
- Conductivity sensor A0544928
- Programmable controller 1575CTRL
- Peristaltic metering assembly A0544931
- Solenoid valve assembly A0544932
- 1" turbine meter A0544927
- Hall effect cable A0544929
- Pump repair kit PX01142



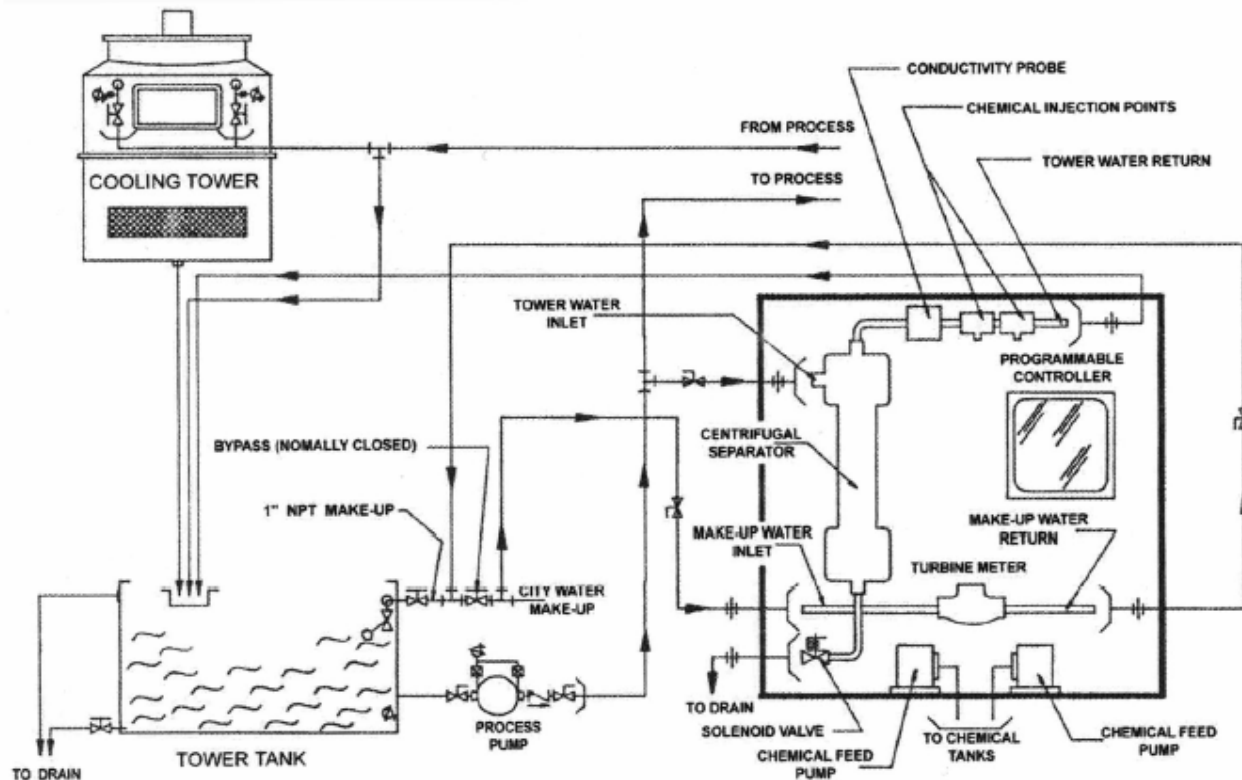
### Specifications

Model Number	Shipping Weight, lbs. (kg)	Width, in. (cm)	Height, in. (cm)	Voltage
TWMV280	140 (64)	33 (84)	33 (84)	114/1/60

### Test Kits

Model Number	Description	Shipping Weight, lbs. (kg)
TK-1	Organo phosphate test kit (PN: A0504914)	2 (1)
TK-2	Chloride test kit (PN: A0509929)	2 (1)

### Typical Water Tower Management System Schematic



[www.colortronicna.com](http://www.colortronicna.com)

**Corporate Headquarters:**  
Colortronic North America, Inc.  
4100 Market Place  
Flint, MI 48507  
PH: 810-720-7300  
FX: 810-720-2598  
[colortronicweb@corpemail.com](mailto:colortronicweb@corpemail.com)

Dimensions and data not binding. Copyright by Colortronic 2004.